

FUTURE

NURSE. MECHANIC.

GRAPHIC DESIGNER.

BEAUTICIAN. CHEF.

POLICE OFFICER.

CARPENTER. JOURNALIST.

PROGRAMMER.

CHILDMINDER.

BUSINESS LEADER.

TEACHER. ENGINEER.

FITNESS INSTRUCTOR.

FOOTBALL COACH.

PRINCIPAL'S WELCOME

Buxton & Leek College is a community asset, and a place of learning, where everyone can reach their full potential.

Whether you are leaving secondary school with top-grade GCSE results, and progressing to advanced level study in preparation for university, or looking to build new skills in an environment that better suits the way that you like to learn, we have a programme that's the perfect fit for you.

Our latest prospectus is designed to provide potential students with a guide to the career pathways that we can help you to navigate. This is not simply a guidebook to qualifications though; it also provides a deeper insight into the careers that are ahead of you, and showcases some inspiring stories from our past students – those who chose BLC to help them reach their true potential.

At BLC, we proudly focus on technical and professional qualifications, but make no mistake, these are just as challenging as the more conventional academic studies offered at school or sixth form. Rather than simply building knowledge in traditional classrooms, our students experience many different and specialist environments themselves, that build the knowledge, practical skills, and behaviours, that will make them stand out from the crowd; whatever their chosen career pathway.

Our students benefit from being part of a larger organisation. Our progression routes through Further Education connect seamlessly with those in Higher Education. We have unique access to resources, services, and opportunities that are simply out of reach of many other colleges.

Education and training after the age of 16 can take different forms and for half of all school leavers, going to university is not in their immediate plans. Progressing onto an Apprenticeship, getting a job, or simply learning how to be more independent are all just as valuable.

Although we help you to think big, we like being a small college. We will personalise your experience by getting to know you as an individual. Our programmes combine learning in your subject with essential skills for work and life, and a wide variety of other activities and challenges that will take you out of your comfort zone and into the world of your future career.

Len Tiddsley

**YOUR AMBITIONS
ARE DESTINATIONS.
YOUR CAREER IS
THE ROADWAY.
LEARNING IS
THE VEHICLE.
GET ONBOARD
WITH BLC.**



3 CAMPUSES

2 ORGANISATIONS

1 COMMUNITY

GO INFINITE POSSIBILITIES

A technical college for careers, not courses.

Here at BLC, we'll help you to discover different careers and get ready for the industry you have a real passion for. We collaborate with colleagues and external partners to meet the skills needs of local organisations, through a wide range of vocational programmes and Apprenticeships across different subject areas. So, whatever your career ambitions, you can find the right path for you.

Part of the University of Derby

As we're part of a university, you'll benefit from the services and support networks of a large academic institution. Not to mention great facilities, technical spaces, and state-of-the-art industry equipment.



**UNIVERSITY OF
DERBY**

CONTENTS

| | |
|------------------------------------|----|
| Spring Forward with BLC | 2 |
| Our Campuses | 4 |
| Student Support | 6 |
| Money Matters | 8 |
| BLC Enrichment | 10 |
| Entry Requirements & What We Offer | 11 |
| Full-time Study Programmes | |
| Quick Guide | 12 |

SUBJECT AREAS

| | |
|--|----|
| Art, Design & Media | 14 |
| Business, Management & Finance | 16 |
| Carpentry & Joinery | 18 |
| Computing & IT | 20 |
| Education & Childcare | 22 |
| Engineering | 24 |
| Football Academies | 26 |
| Hair & Beauty Therapy | 28 |
| Health & Social Care with Applied Psychology/Counselling | 30 |
| Hospitality & Catering | 32 |
| Motor Vehicle & Logistics | 34 |
| Sports, Adventure, Fitness & Coaching | 36 |
| Uniformed & Protective Services | 38 |

QUICK GUIDES

| | |
|----------------------|----|
| T Levels | 40 |
| Apprenticeships | 42 |
| Step Up with BLC | 44 |
| Supported Internship | 46 |
| Traineeships | 47 |

APPLICATION

| | |
|---------------------------|----|
| How To Apply | 48 |
| Practice Application Form | 49 |

SPRING FORWARD WITH BLC

Whatever your future ambitions, our wide range of programmes and Apprenticeships are designed to help you progress after school or college.

We want every one of our students to aim high and use their experience with us to achieve our core values:

- Be Brilliant
- Be Bold
- Future Focused
- Value People

We'll support you every step of the way, whether you want to prepare for employment, go on to university, enjoy further training, or just do something different and discover yourself.

We've invested £millions in state-of-the-art Engineering, Carpentry, Art & Design, and Hair & Beauty salon facilities at our Leek campus, along with new simulation suites in Buxton for Health Care, Early Years, and Digital Support.

NEW FOR AUTUMN

During the Autumn term 2023, we'll be opening our new commercial bistro for Hospitality and Catering, in addition to our existing real-world learning facilities.



TAKING THE NEXT STEP

To help you discover who you want to be and prepare for the next stage in your journey, we've put careers, employability, work placements, industry links, and training at the heart of your learning experience.

Our team of Careers Advisors, Placement Officers, and Progress Coaches will support you with your future career aspirations and work experience.

OUR PARTNERSHIP WITH THE UNIVERSITY OF DERBY

We're uniquely positioned to be able to offer you a seamless transition from Entry Level 1 all the way through to Foundation Degrees, Bachelor's Degrees, Master's Degrees, and PhDs at the University of Derby.

You'll also benefit from our unique relationship with the University of Derby in other ways:


- Opportunities to engage with university tutors and learn about university life.
- Visits to the university campuses to gain real-life experience of university learning.
- Automatically becoming part of the University's Union of Students, which provides access to a variety of societies, sports, activities, and support.

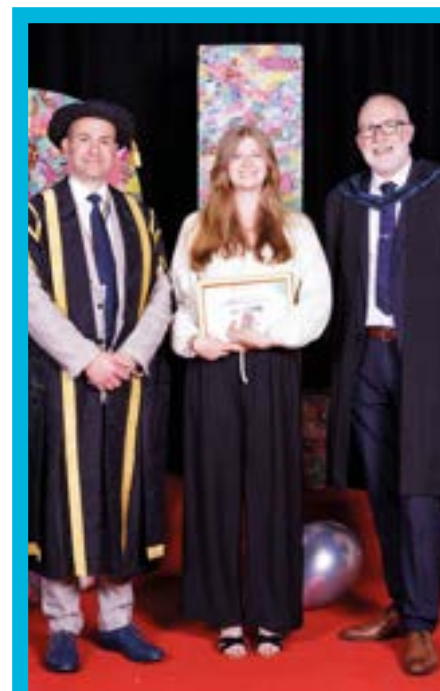


1st
Higher Education
Institution of the Year*
*2020 NEON Awards

**TOP
20**
in the UK for overall
student satisfaction*
*Complete University Guide 2024

**TOP
50**
UK University*
*The Guardian University Guide 2023

Part of the
University of Derby

**UNIVERSITY OF
DERBY**



OUR CAMPUSES



Our campuses are at the heart of Buxton and Leek local communities, close to their vibrant town centres. It's easy to get here from Ashbourne, Stoke-on-Trent, Derbyshire, Stockport, Macclesfield, Glossop, and Staffordshire.

WHY STUDY AT BLC?

FRIENDLY AND NURTURING ENVIRONMENT

With smaller class sizes, we're able to spend more time focusing on you and your progression.

INDUSTRY PARTNERS

We've great links with local employers and organisations.

GREAT FACILITIES

Our campuses are home to the latest tech and industry standard equipment.

A UNIVERSITY COMMUNITY

As we're part of the University of Derby, you'll benefit from a larger support system, great progression opportunities, and access to the best equipment and facilities.

VIRTUAL CAMPUS TOUR

Take a personal tour of our campuses from the comfort of your own home with our 360 virtual tour: www.blc.ac.uk/about-blc/our-facilities/

Scan the QR code for more information



BUXTON CAMPUS

Devonshire Road, Buxton, SK17 6RY

By bus – BLC is easily accessible by bus. Term-time bus passes are available at a reduced cost.

By train – the station is a five-minute walk away. Trains run from Stockport and Manchester.

By car – student car parking is available for blue badge holders. The nearest public car park is at Pavilion Gardens on Burlington Road. Free street parking is available near the Dome on Devonshire Road, Marlborough Road, and Manchester Road.

LEEK CAMPUS

Stockwell Street, Leek, ST13 6DP

By bus – Leek bus station is a short walk away.

By car – reasonably priced local car parks close by. Many of our students also find free parking on side streets.

HARPUR HILL CAMPUS SPECIALIST MOTOR VEHICLE TRAINING CENTRE

Unit 28, Harpur Hill Business Park, Buxton, SK17 9JL

By bus – a free shuttle bus is available between campuses.

BUS TRAVEL

You can apply for a bus pass that provides term-time travel on selected college bus routes when you enrol. A free connecting bus service, running between Buxton and Leek campuses is also available.



Useful links

www.blc.ac.uk/transport

www.railcard.co.uk

www.nationalrail.co.uk

www.staffordshire.gov.uk/transport/publictransport/buses

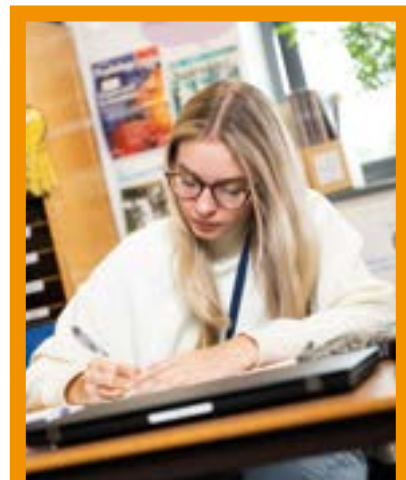




STUDENT SUPPORT

Our study programmes are tailored to you and designed to support your learning and progression. There is so much more to your college experience than qualifications!

We offer lots of support and exciting activities that will help you to develop your life skills. You'll be able to grow in confidence, have fun, get ready to go to university, launch your career, or start an Apprenticeship.



INFORMATION, GUIDANCE & ADMISSIONS

From the moment you enquire about or apply for one of our programmes, we'll help you make the right choice and support you by email, text, phone or face-to-face.

TUTORS & ASSESSORS

Your Tutors and Assessors will support you throughout your learning journey. They will regularly meet with you to set your targets, track your achievements, help you complete your programme, and get ready for the future.

PROGRESS COACH

Your coach will hold regular 1:1s with you to support you during your time here. Your Progress Coach also delivers Future-Focused sessions that are designed to help students stay safe and healthy, and prepare for life after college.

STUDENT MENTORS

We'll help you to feel safe and well during your studies. We provide advice and guidance on personal issues that might impact on your learning or student experience, such as mental health, physical health, or housing.

STUDENT VOICE

We want you to feel supported at BLC. Our students are at the heart of everything we do. We'll ask you for your suggestions and listen to your feedback, so we can keep on improving the experience we offer.

ADDITIONAL LEARNING SUPPORT TEAM

If you've a learning or physical disability, gaps in your learning, or a specific learning difference, we'll support you with additional help to progress and achieve.

MATHS & ENGLISH

These are essential skills for many employers and universities, so, we'll assess if you need extra support. We provide different levels of study and our TES award-winning team have pass rates above the national average for students who retake their GCSE Maths and English.

CAREERS & EMPLOYMENT SERVICE

Our impartial Careers & Employment Service can help you explore different progression routes, make the right career choices, and find a job while you're at college or when you finish your studies.

INDEPENDENT LEARNING

We'll help you develop your independent learning skills, so you can think critically, work on your own, and develop the confidence to succeed.

EMPLOYER ENGAGEMENT & PLACEMENTS TEAM

Thanks to our excellent industry links, you can go on a work placement to develop your skills, boost your CV, and get the right experience for your future career. You'll also be able to visit employers, attend seminars, and hear from industry specialists.

LIBRARIES

We've libraries on both campuses where you can access a range of books, magazines, equipment, and digital resources to support your learning.

UNIVERSITY VISITS

We arrange trips to universities for our students throughout the year, so you can check out your options.

STUDENT DISCOUNTS

Apply for a student discount card online or at our Union of Students to get access to 200+ UK discounts on travel, shopping, eating out, and entertainment.

Other perks include:

- 30% off hair and beauty treatments at our campus salons.
- Save when you buy a new Apple Mac and receive a gift card worth £130.
- 20% off retail products, including Wella.
- 10% off spa packages.

Scan the QR code for more information



8 MONEY MATTERS

During your time at BLC, there may be things you have to pay for to fully engage with your course, including:

- Travel to and from college
- Food and drinks if you're on campus
- Books, uniform, kit, or equipment
- Professional memberships
- Childcare for dependents
- DBS application
- UCAS application
- Field trips/additional courses
- Tuition fees

You need to plan ahead and budget for these, or depending on your circumstances, you could be eligible for financial support. This may be limited to students of a specific age group, studying certain subjects, or living in certain areas.

If you qualify you might be eligible for:

- A bursary – which you wouldn't have to pay back.
- A loan – which you would have to pay back.
- A charitable trust to purchase goods on your behalf.

SUPPORT WITH TUITION FEES

Aged 16-18 years

- You won't need to pay tuition fees (residency criteria will apply).

Aged 19 years or over

- **Level 2 courses & below** - your tuition fees may be waived depending on your circumstances.
- **Level 3 courses** - your course could be free, depending on criteria such as your age and chosen qualification.
- **Level 4 courses** - tuition fees are more likely to apply. However, an Advanced Learner Loan may be available.

If you do have to pay tuition fees, you may be able to take out an Advanced Learner Loan to cover the cost of your studies. This loan isn't means tested, and as it's government funded, you don't have to pay anything back until you're earning £27,295 or more a year (residency criteria will apply). Please note that the thresholds change each year.

Please get in touch with us to discuss your individual circumstances.

DISCRETIONARY LEARNER SUPPORT

BLC are able to support some students with up to 75% of their course cost where other forms of funding are unavailable. This will be via the 19+ Discretionary Learner Support Fund.

SUPPORTING YOU WITH FUNDING

We're granted limited funding each academic year to issue out as bursaries on a first-come, first-served basis. Eligibility for one will depend on your age, course, household income, residency criteria, and costs associated with the course for which you require support.



These bursaries may be available for learners on full-time/part-time study programmes, supported internship or traineeships:

FREE COLLEGE MEALS

Learners may be eligible for a free meal on each full timetabled day they are due to be with us. Eligibility will depend on age, course of study, and receiving certain benefits.

16-19 BURSARY

If you're aged between 16-19 and you're from a low-income household, or facing financial hardship, you could be eligible for financial support from this bursary to help with additional course costs. Learners who require childcare support will also need to apply for the government Care to Learn Scheme.

VULNERABLE YOUNG PERSON BURSARY

You could be eligible for this bursary if you're aged 16-18, in care, a care leaver, living independently (receiving certain benefits), or have children of your own.

19+ LEARNER SUPPORT FUND/ ADVANCED LEARNER LOAN BURSARY

If you're aged 19 and over, and from a low-income household or facing financial hardship, you could be eligible for financial support from this bursary to aid with additional course costs.

Scan the QR code for more information



Got a question about our fees or financial support?

Call us on 0800 074 0099 and ask to speak to our Student Money and Rights Advisor.

More information

www.blc.ac.uk/financial-support/funding-bursaries-loans/

www.gov.uk

www.gov.uk/advanced-learner-loan

BLC ENRICHMENT



You can get involved in free activities throughout the year with our Enrichment Team and Union of Students.

VOLUNTEERING

Support charities, help your community, develop your skills, and boost your CV, by taking part in fundraising events, Volunteer Week, and community and befriending projects.

EXTRA QUALIFICATIONS

Want to stand out from the crowd when you apply for a job or university? Our Enrichment offering provides all students with the opportunity to gain extra qualifications.

LIFE SKILLS

We've all kinds of enrichment projects that will help you to expand your personal skills, including wellness, car maintenance, and cookery.

STUDENT COMPETITIONS

We'll help you to enter regional, national, and global competitions that will test your skills against students from all around the world!

SPORTS

We've our own sports teams that take part in leagues and charity events. We also offer a range of sports and gym activities throughout the year.

BLC INVEST

BLC Invest is a student-centred strategy which provides structured, holistic, and affirming experiences that go beyond the traditional curriculum and learning.

We invest in all students and apprentices, but equally expect you to do the same throughout your time on the programme, so you can develop skills, behaviours, and attitudes to help make a successful future.

We run a range of activities to help develop and enhance skills in these areas. Students will be asked to complete a self-assessment as part of their career planning to help identify what skills they wish to develop, with the support of their Progress Coach.

SOCIAL EVENTS

Get involved. Meet new friends. Go on trips to places like Alton Towers, Tittesworth Water, and the Houses of Parliament.



Scan the QR code for more information



ENTRY REQUIREMENTS & WHAT WE OFFER

STUDY PROGRAMMES

We offer vocational study programmes in a range of subject areas from Level 1 to Level 3. So, whatever your ambitions and abilities, you'll be able to start building your skills and career in an industry that you love.

What you need:*

- **Level 1** - GCSE English at Grade 3 plus 3 GCSEs at Grade 2 or above. For some courses you may not need any entry requirements.
- **Level 2** - 4 GCSEs at Grade 3 or above including Maths or English. Science or ICT may be required for specific subjects or a Level 1 qualification.
- **Level 3** - 5 GCSEs at Grade 4 or above including Maths and English. Science or ICT may be required for specific subjects or a Level 2 qualification.

T LEVELS

These new, technical qualifications are equivalent to 3 A Levels. Through a mix of classroom and on-the-job experience, they provide learners with the specific skills and knowledge different industry employers are looking for.

What you need:

At least a GCSE Grade 5 in Maths and English. You can read more about the specific entry requirements on page 40 or on our website.

APPRENTICESHIPS

This is a great way to earn whilst you learn. We've strong links with some of the region's top employers, so you can kickstart your career with incredible industry opportunities.

What you need:

- A good standard of Maths and English, ideally GCSE 4/C or above, or an equivalent qualification. This can vary depending on the Apprenticeship and level studied.

TRAINEESHIPS

These programmes will grow your skills, boost your employability, improve your career options, and upskill your Maths and English. They are designed for students to gain experience in order to secure a job or Apprenticeship.

What you need:

- There are no formal entry requirements to begin a Traineeship with us. All you need is the motivation and enthusiasm to enter work placements as your opportunities grow.

SUPPORTED INTERNSHIP

This is an individualised programme of study for 16-24-year-olds. It's designed for students with Special Educational Needs and Disabilities (SEND) and an Education Health and Care Plan (EHCP), who wish to move into employment and require additional support to achieve their goals.

What you need:

- There are no formal entry requirements to enrol onto a Supported Internship. You need basic work skills and to have carried out some work experience.

STEP UP

These bespoke, small-group programmes of study, consider the individual aspirations and needs of each learner. They have been created by a dedicated and specialised team who embrace a learner-focused approach to developing life and employment skills.

We understand the challenges our Step Up learners face as they progress. So, we make sure they receive appropriate support and their individual experiences, achievements, and outcomes are sustainable and accomplished.

Scan the QR code for more information



*Entry requirements may differ depending on the subject area you choose.

FULL-TIME STUDY PROGRAMMES QUICK GUIDE

If you want to gain the practical skills and knowledge that you need to set off on your chosen career path - our vocational programmes are ideal for you. They are tailored to help you grow and progress into further education, university, or employment.

WHY STUDY A VOCATIONAL QUALIFICATION?

- Study one main subject and get involved with activities that will boost your CV.
- Gain skills and a qualification recognised by your industry.
- Develop hands-on skills and gain real-world experience using industry-standard facilities.
- Learn with friends on campus.
- Grow your skills in Maths and English.
- Develop your resilience, confidence, and employability.
- Progress to Higher Education, or a career in your chosen industry.

WHAT VOCATIONAL QUALIFICATIONS CAN YOU STUDY HERE?

- **BTECs** – career-based qualifications designed to give you the skills you need to move on to Higher Education or go straight into employment.
- **Industry specific** – including CACHE, and Institute of the Motor Industry (IMI).
- **T Levels** – the equivalent of 3 A Levels, this qualification is a mixture of academic and vocational study leading to employment or university.

WHAT DO OUR FULL-TIME PROGRAMMES INVOLVE?

- **Gain a recognised qualification** in your subject area studying on campus.
- **Maths and English** – if you've GCSE Grade 4/C or above in these subjects, you'll develop skills in these areas as a part of your programme. If you've GCSE Grade 3/D or less, you'll also study GCSEs in these subjects or Functional Skills alongside your main qualification.
- **Work experience** – you'll experience the real-world of work with a local employer.
- **Enrichment** – you can boost your CV and make the most of your time here with a range of activities, including sports, volunteering, charity work, clubs, and societies.
- **Study support** – our Learner Journey Team can help you with all aspects of your study programme, talk to you about your options after college, and support your university and job applications.
- **Resource-based learning** – spend time in our Learning Hubs working on projects or learning new things.

More employers and universities than ever are choosing BTEC and T Level qualified candidates.



STEP UP - LEVEL 1

- Entry requirements – no formal requirements.
- Focused on exploring career opportunities and developing employability skills.
- Centred on building confidence, learning to learn, and professional behaviour.
- Maths, English, Digital Skills, and options to experience broad sector vocational provision.

Next step: Progress to further study at a higher level or move to a Supported Internship, Traineeship, Apprenticeship, or general employment.

APPLIED INTERMEDIATE – LEVEL 2 (ACADEMIC PATHWAY)

- Entry requirements – at least 3 Grade 3 passes at GCSE or have completed our Step Up Level 1 programme.
- For those looking to progress to university.
- All students will study Maths, English, and Digital Skills.
- For some students the programme will involve appropriate resource-based workshops.

Next step: Progress to Level 3 study.

PROFESSIONAL ENTRY – LEVEL 2 (CAREER PATHWAY)

- Entry requirements – based on interview and reference from prior study. Will be unconditional for those who successfully complete the College Step Up Programme.
- Build knowledge, skills, and behaviours within a chosen industry.
- For students who are looking for employment within a practical or vocational career.
- Opportunity to achieve additional qualifications to enhance your CV.

Next step: Progress to employment, an Apprenticeship, or the Career Professional Programme at Level 3.

APPLIED ADVANCED – LEVEL 3 (ACADEMIC PATHWAY)

- Entry requirements – completion of a Level 2 programme or a minimum of 4 GCSE passes at Grade 4 or above.
- All Level 3 programmes will include an element of resource-based learning and/or online learning, along with workshop support for Maths, English, and Digital Skills.
- Students should be confident, independent learners, who are able to see clear progression to Higher Education.

Next step: Progress to university.

CAREER PROFESSIONAL – LEVEL 3 (CAREER PATHWAY)

- Entry requirements – in most cases requires completion of the relevant Level 2 programme to ensure students have suitable technical skills and knowledge.
- Designed to enhance the prospects of students completing Professional Entry Programmes.

Next step: Progress into employment.

T LEVELS

- Entry requirements – as T Levels are equivalent to 3 A Levels, most subjects will have entry requirements of 5 GCSEs at Grade 4/C or above.
- Each T Level could also have specific entry requirements.
- Gain a technical qualification that includes core theory, concepts, and skills for an industry area.
- Specialist skills and knowledge for an occupation.
- Go on an industry placement with an employer.

Next step: Go straight into work or Higher Education, with a maximum of 168 UCAS points achievable for the highest T Level grade.

ART, DESIGN & MEDIA



LEEK SCHOOL OF ART
HERITAGE INSPIRING PROGRESS

If you've got a talent for Art, Design, or Media and want to express your creativity - these programmes are for you. Learning in our purpose-built studios, you'll create a portfolio of work in your chosen specialism, ready to show to universities and employers.



CAREER PROSPECTS

- The creative industry makes up 6.9% of all jobs in the UK, with the demand for creative roles set to peak in the next 5 years.
- The North West has the largest creative and digital economy outside of London, with Manchester's MediaCity just one hour away from our campuses.
- As creative minds are wanted by all industries, these courses open up many opportunities.
- Our graduates go on to work in marketing, PR, design, journalism, and more.

REAL-WORLD LEARNING

- Develop real-world skills using our Macs, cameras, lighting equipment, and design and editing software.
- Showcase your work at exhibitions throughout the year.
- Be inspired by guest speakers and go on industry visits.
- Our specialist industry facilities include textiles, 3D, ceramics, silkscreen and digital sublimation, traditional printing, photographic dark rooms, and laser cutters.
- Get industry experience on placements with newspapers, radio stations, or media, marketing and advertising agencies.



STUDY PROGRAMMES

- Level 2 Creative Media
- Level 3 Art & Design
- Level 3 Creative Media Skills
- Level 3 Foundation: Art, Design & Media Practice

POTENTIAL STUDY PROGRESSION ROUTE 19+

- Level 4 HNC Creative Media Production

OUTSIDE PROJECT OUTSIDEARTS.ORG

We work closely with this new community arts programme that aims to improve accessibility, open up new opportunities, and provide a support network for artistic people in the Staffordshire Moorlands.



FUTURE CAREERS

- Art Therapist - **£35,824**
- Artworker - **£29,214**
- Fashion Designer - **£35,155**
- Film/TV Producer - **£37,899**
- Fine Artist - **£40,795**
- Graphic Designer - **£30,632**
- Journalist - **£37,025**
- Magazine Editor - **£35,124**
- Photographer - **£32,736**
- Product Designer - **£51,231**
- Sound Engineer - **£32,777**
- Television Camera Operator - **£29,310**
- Web Developer - **£37,419**

"It was a really comfortable, homely environment with small, supportive groups, and space to learn. I got to learn everything from photography to textiles to graphics. I didn't know what I wanted to do, so trying all these areas meant I got to learn about myself as I was learning about the subject area."

LAURA MILLWARD

BLC ART & DESIGN GRADUATE &
BUSINESS OWNER OF 'HEY IT'S A SIGN'

Scan the QR
code for more
information
on Media



Scan the QR
code for more
information on
Art & Design



BUSINESS, MANAGEMENT & FINANCE



Develop transferable skills for lots of different industries and career pathways. Learn to succeed as an entrepreneur, or in marketing, HR, finance, operations, customer service, or management.

CAREER PROSPECTS

- Business, management, and finance roles in the UK make up an impressive 9% of jobs.
- Professional and junior roles are always required, making this industry a great match for those looking for a long-term career.



Scan the QR code for more information



REAL-WORLD LEARNING

- Learn about many different aspects of business from HR and marketing, to finance and entrepreneurship.
- Opportunity to take professional AAT qualifications to specialise in finance and accounting.
- Placements and work experience opportunities in a range of industries.
- Tutors with a wealth of business knowledge.
- Industry guest speakers and visits to enterprise exhibits and activities.
- Take part in fundraising and entrepreneurial business challenges, as well as enterprise projects such as Virtual Investor, where teams invest a virtual £100k.

FUTURE CAREERS

- Business Analyst - **£48,748**
- Chief Executive - **£141,344**
- Management Accountant - **£42,522**
- Management Consultant - **£47,903**
- PR Officer/PR Professional - **£40,242**
- Supervisor - **£28,815**
- Sales Director/Manager - **£68,438**

STUDY PROGRAMMES

- Level 3 Business

POTENTIAL STUDY PROGRESSION ROUTE 19+

- Level 4 Computing (with Business Management)

APPRENTICESHIPS

- Level 2 Accounts or Finance Assistant Apprenticeship
- Level 2 Customer Service Practitioner Apprenticeship
- Level 3 Assistant Accountant Apprenticeship
- Level 3 Business Administration Apprenticeship
- Level 3 Customer Service Specialist Apprenticeship
- Level 3 Team Leading Apprenticeship
- Level 4 AAT Professional Accountant Apprenticeship
- Level 5 Operations & Department Manager Apprenticeship

CARPENTRY & JOINERY

If you want to learn a trade and gain hands-on experience, you can develop the skills you need to make it as a carpenter or joiner at our purpose-built facility, based on our Leek campus.



CAREER PROSPECTS

- Construction makes up over 9% of the total job roles in the UK, so it's a major sector to invest your future in.
- It's the 6th ranked sector for growth in employment over the past 5 years.

REAL-WORLD LEARNING

- Both Site and Bench/Architectural routes are available.
- Develop your skills working with the latest tools and equipment at our Carpentry & Joinery facility.
- Take part in regional and national competitions.
- Learn from experienced tutors.
- Go on industry visits to gain specialist knowledge.
- Listen to guest speakers, go on placements, and gain work experience with local employers.

FUTURE CAREERS

- Builder - **£30,940**
- Building Surveyor - **£39,466**
- Construction Manager - **£61,708**
- Furniture Maker - **£25,656**
- Kitchen Fitter - **£33,375**
- Wood Machinist - **£25,016**

STUDY PROGRAMMES

- Level 2 Carpentry & Joinery
- T Level Onsite Construction

APPRENTICESHIPS

- Level 2 Site Carpenter or Architectural (Bench) Joiner Apprenticeship
- Level 3 Site Carpenter or Architectural (Bench) Joiner Apprenticeship

Scan the QR code for more information



Enjoy an exciting career in a wide variety of industries. There's already a digital skills shortage, and it's estimated that employers will need more coders, programmers, and IT professionals in the future. As artificial intelligence (AI) and IT develops at pace, you could work with the latest tech and take on new roles.

COMPUTING & IT



CAREER PROSPECTS

- In an increasingly digital age, there is a persistent shortage of suitably skilled workers in the UK labour market.
- 81% of UK businesses say they lack the digital skills they need.

REAL-WORLD LEARNING

- Develop your programming, coding, networking, or digital marketing skills.
- Upgraded in 2022, our computer suites offer the latest software and programmes.
- Design an interactive computer game from concept to implementation.
- Attend industry events and take part in industry activities.
- Grow your skills through work experience and placements in a range of sectors.
- Enter regional, national, and international skills competitions.
- Opportunity to take additional qualifications and develop different skills.

FUTURE CAREERS

- Cyber Intelligence Officer (Security) - **£68,376**
- IT Business Analyst - **£52,649**
- IT User Support Technician - **£33,188**
- Programmer - **£57,500**
- Software Developer - **£65,363**
- Web Designer/ Developer - **£31,508**



STUDY PROGRAMMES

- T Level in Digital Production, Design and Development

Scan the QR code for more information



EDUCATION & CHILDCARE

Learn to make a real difference to young people's lives in all kinds of roles from teachers to trainers, to nursery nurses and nannies. Develop the skills you need to enjoy a rewarding and varied career in an environment where no two days are the same.

CAREER PROSPECTS

- It's estimated that there are over 68,000 childcare providers in the UK.
- A labour shortage in both the early years and school workforces means this sector offers secure employment.
- The DfE's reformed structure of teacher pay promises a minimum starting salary of £30,000 throughout England.

REAL-WORLD LEARNING

- Experience working in a childcare/education setting as part of your programme.
- Be taught and inspired by industry specialists and guest speakers.
- Get hands-on skills and experience at our brand-new, on-site T Level childcare setting.
- Work on industry projects with local childcare and education providers.
- Go on work placements and gain experience with local employers.
- Boost your employability with additional qualifications such as Paediatric First Aid.

FUTURE CAREERS

- Childminder - **£24,758**
- Children's Home Manager - **£55,400**
- Early Years Teacher - **£29,551**
- Primary School Teacher - **£34,268**
- SENCo - **£40,247**
- Teaching Assistant - **£22,424**



STUDY PROGRAMMES

- Level 2 Health & Social Care (Childcare Pathway)
- T Level Early Years Educator (Level 3)

POTENTIAL STUDY PROGRESSION ROUTE 19+

- Level 3 Early Years Workforce (Early Years Educator)
- Level 3 Certificate in Assessing Vocational Achievement
- Level 3 Diploma in Supporting Teaching & Learning
- Level 4 Leading the Internal Quality Assurance of Assessment Processes & Practice

APPRENTICESHIPS

- Level 2 Early Years Practitioner Apprenticeship
- Level 3 Early Years Educator Apprenticeship
- Level 3 Learning & Skills Assessor Apprenticeship
- Level 3 Teaching Assistant Apprenticeship
- Level 4 Learning & Skills Mentor Apprenticeship
- Level 5 Learning & Skills Teacher Apprenticeship



Scan the QR code for more information



ENGINEERING

Want to gain the hands-on engineering skills and experience you need to succeed in Science, Technology, Engineering, and Maths (STEM)? We'll help you get ready for the future in the heart of a region that's home to a huge variety of engineering and manufacturing firms.



CAREER PROSPECTS

- Manufacturing Engineering is a nationally booming industry. More so in the areas around Buxton and Leek, where it's the largest percentage of all industries.
- Skilled workers in Engineering Manufacturing are in demand. Reports from the Institute for Engineering Technology (IET) say that nationally almost half (49%) of engineering businesses are experiencing a recruitment skills gap.

REAL-WORLD LEARNING

- Learn at our purpose-built engineering facility that has specialist industry equipment, including CAD and CAM suites.
- Go on placements and gain work experience with local engineering and manufacturing companies.
- Listen to industry speakers and gain specialist knowledge on industry visits.
- Take part in skills competitions throughout the year.
- Learn from experienced and knowledgeable tutors.

"The course was interesting and taught me a lot about engineering and the different skills that will help me as I start my career. It gave me all the relevant qualifications I needed to meet the entry requirements for Airbus. I'd like to say thank you to my tutors for helping me through the course, as without them I might not be where I am today."

EWAN QUIGLEY

BLC ENGINEERING GRADUATE AND AIRBUS APPRENTICE

Scan the QR code for more information



FUTURE CAREERS

- CAD Designer - **£32,539**
- CNC Operator - **£27,005**
- Design Engineer - **£42,640**
- Engineering Professional - **£43,160**
- Engineering Technician - **£37,960**
- Maintenance Engineer - **£37,500**

STUDY PROGRAMMES

- Level 2 Performing Engineer Operations (Technical Support)
- T Level Technical Qualification in Engineering, Manufacturing, Processing & Control

APPRENTICESHIPS

- Level 3 Machining Technician Engineer
- Rolls-Royce Nuclear Skills Academy

ROLLS-ROYCE NUCLEAR SKILLS ACADEMY



This first-of-its-kind Academy, aims to create a dedicated and sustained pipeline of new talent for the UK's nuclear submarine programme.

Based in Derby at the iHub, the Academy is a partnership between the University of Derby, Buxton & Leek College, and Rolls-Royce. It's also supported by industry and education experts like the Nuclear Advanced Manufacturing Research Centre, the National College for Nuclear, and Derby City Council. This ensures these Apprenticeships offer the best courses and mentors.

Apprentice salaries and tuition fees at the Academy are covered by Rolls-Royce.



FOOTBALL ACADEMIES



Delivered in partnership with Buxton Football Club, Derby County Community Trust, and Leek Town Football Club, these bespoke academic programmes offer aspiring young athletes full-time, elite football and education training.

Developing the skills you need to succeed in the sport industry, you'll learn in purpose-built classroom suites at the football clubs, with qualified coaches delivering the training and on-the-ball skills.

PROGRAMME AT A GLANCE

- Level 2 and 3 Extended Diploma in Sport & Physical Activity.
- Up to 168 UCAS points and a direct pathway to almost all UK universities.
- Diverse degree route options including Sports Science and Business Studies.
- Modules delivered by subject-specialist teachers.
- Majority of assessment is via coursework, with similar academic contact time to 3 A Levels.



Scan the QR code for more information



STUDY PROGRAMMES

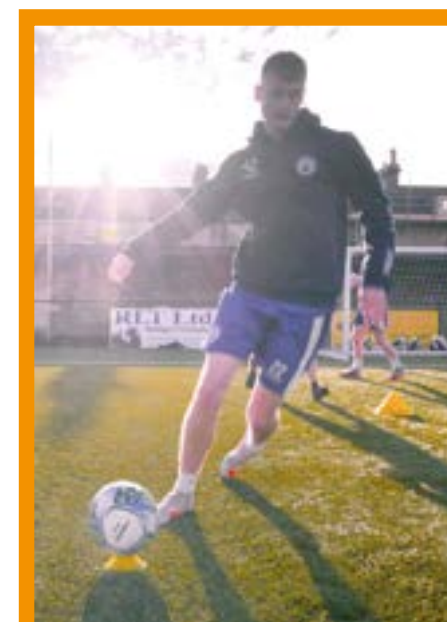
- Level 2 Sport: Buxton Football Academy
- Level 3 Sport: Buxton Football Academy
- Level 3 Sport: Derby County Community Trust Football & Education Programme
- Level 3 Sport: Leek Town Football Club Academy

REAL-WORLD LEARNING

- Opportunities to train with senior players at the football clubs, and shadow professional coaches and players.
- Possibility of educational trips to places like St George's Park and Wembley Stadium.
- Use state-of-the-art facilities, including our Academy Fitness Suite and video and GPS Analysis Software programmes.
- You could progress at the clubs from academy to semi-pro to the first team.
- Access BLC student benefits, including college transport links, bursary schemes, and more.

FUTURE CAREERS

- Sports Development Manager - **£30,000**
- Sports Development Officer - **£21,500**
- Sports Journalist - **£29,190**
- Strength Conditioning Coach - **£29,287**
- Professional Football Coach - **£25,000**



"I would say this course has helped me to explore career opportunities within the sport and physical activity sector, and it's provided me with a foundation of knowledge that I can now expand on. I managed to get an offer at my first-choice university on a course that only accepts 30 people per year, and I get to fulfil an ambition of travelling to Australia."

AVLEEN KAUR

LEVEL 3 SPORT: DERBY COUNTY COMMUNITY TRUST FOOTBALL & EDUCATION PROGRAMME, AND WINNER OF THE BLC SPORT STUDENT OF THE YEAR AWARD AT THE 2023 FE AWARDS

HAIR & BEAUTY THERAPY

Scan the QR code for more information



Want a career in hairdressing, beauty, massage, or spa management? Then develop your confidence and practical skills in our fantastic, industry-standard facilities. In the future, you could travel the world, run your own business, and even work with high profile clients and celebrities.



CAREER PROSPECTS

- The hair and beauty industry is worth £680 billion worldwide.
- Employment in the UK sector is predicted to grow by 2.7% by 2025.
- It's one of the largest sectors in Derbyshire and Staffordshire, with 8,690 hairdressing and barber jobs in 2021.

REAL-WORLD LEARNING

- Learn to provide professional treatments to customers in our state-of-the-art commercial salons in Buxton and Leek.
- Train with leading brands such as Dermalogica, MAC, Wella, and Naitiques. Buy their products at cost price to build your kit.
- Our great industry links with employers locally, nationally, and globally open up a variety of opportunities.
- Enjoy professional training and go on visits to well-known hair and beauty brands, such as the Wella Studios in Manchester.
- Enter industry competitions to showcase your skills, get inspired, and be taught by industry guest speakers.



POTENTIAL STUDY PROGRESSION ROUTE 19+

- Level 3 Body & Spa Therapy
- Level 3 Complementary Therapies
- Level 3 Hairdressing

APPRENTICESHIPS

- Level 2 Beauty Therapy Apprenticeship
- Level 2 Hair Professional Apprenticeship
- Level 3 Advanced & Creative Hair Professional Apprenticeship
- Level 3 Beauty & Spa Therapy Apprenticeship
- Level 3 Wellbeing & Holistic Therapy Apprenticeship

FUTURE CAREERS

- Beauty Brand Trainer - **£28,100**
- Beauty/Spa Therapist - **£42,443**
- Colourist - **£34,700**
- Hairdresser/ Barber - **£26,622**
- Make Up Artist - **£24,906**
- Nail Technician - **£24,366**
- Product Salesperson - **£27,120**
- Salon Manager - **£36,719**
- Stylist - **£25,494**

STUDY PROGRAMMES

- Level 1 Hair & Beauty
- Level 2 Beauty Therapy
- Level 2 Hairdressing



HEALTH & SOCIAL CARE WITH APPLIED PSYCHOLOGY/COUNSELLING

If you want to make a real difference to people's lives, Health & Social Care with Applied Psychology/Counselling offers a variety of interesting and rewarding careers. Gain practical hands-on experience and learn from tutors with expertise in counselling, nutrition, anatomy, physiology, sociology, and psychology.



CAREER PROSPECTS

- To meet the expected demand in adult social care, an increase of 29% (490,000 extra jobs) will be required by 2035.
- The largest employer in the UK healthcare sector is the NHS, which employs around 1.5 million people.

REAL-WORLD LEARNING

- New for 2023 – study in our new replica hospital ward with industry-standard facilities.
- Develop your skills with work placements and work experience at a range of employers.
- Study applied psychology.
- Be taught and inspired by guest speakers and industry specialists.
- Boost your employability with additional First Aid and Dignity in Care qualifications.
- Take part in projects with local childcare and education providers.
- Get involved with projects and activities that support charities and local communities.

FUTURE CAREERS

- CBT Therapist - **£41,609**
- Health Trainer - **£38,349**
- Medical/Dental Technician - **£29,432**
- Medical Radiographer - **£38,575**
- Occupational Therapist - **£41,727**
- Paramedic - **£28,594**
- Police Officer - **£39,235**
- Prison Officer - **£34,617**
- Psychologist - **£45,057**

STUDY PROGRAMMES

- Level 2 Health & Social Care
- Level 3 Health & Social Care
- T Level Health

POTENTIAL STUDY PROGRESSION ROUTE 19+

- Level 4 & 5 Children and Young People's Services for Health & Social Care



Scan the QR code for more information



HOSPITALITY & CATERING

The Peak District, and hospitality and catering go hand-in-hand. These programmes will provide you with the skills and experience you need to enjoy a rewarding and successful career in this exciting field, as you learn from experts in our sector-leading facilities.



FUTURE CAREERS

- Bar Manager - £30,079
- Catering Manager - £22,080
- Chef - £30,817
- Hotel Manager - £39,404

STUDY PROGRAMMES

- Level 1 Introduction to Professional Cookery
- Level 2 Professional Cookery

APPRENTICESHIPS

- Level 2 Commis Chef Apprenticeship
- Level 2 Craft Bakery Apprenticeship
- Level 2 Hospitality Team Member Apprenticeship
- Level 3 Hospitality Supervisor Apprenticeship
- Level 4 Hospitality Manager Apprenticeship

CAREER PROSPECTS

- The hospitality and catering industry makes up more than 7% of jobs within the UK.
- There is a large demand in the local area for skilled culinary staff.
- Chefs are particularly in demand, which means jobs in this area are widely available.

REAL-WORLD LEARNING

- Learn from tutors with a wealth of sector experience in our seven industry-standard facilities, which include catering kitchens.
- Enter regional, national, and international competitions.
- Gain work experience and go on placement opportunities with some of the best hotels and restaurants in the region – and beyond.
- Boost your employability with additional qualifications such as Food Hygiene.
- Benefit from our impressive industry links, demonstrations, and visiting guest speakers.



MOTOR VEHICLE & LOGISTICS

Want to get ready for an interesting and exciting career in the constantly changing motor vehicle industry? Gain hands-on experience. Develop your skills. Learn to maintain and repair a variety of vehicles at our specialist motor vehicle training centre at our Harpur Hill campus.



CAREER PROSPECTS

- Analysis from the IMI (Institute of the Motor Industry) has found that automotive vacancies are at their highest level for 20 years at 23,000+.
- Industry roles account for around 4% of the workforce.
- Motor trades has the 6th highest vacancy rate of all industry sectors.

STUDY PROGRAMMES

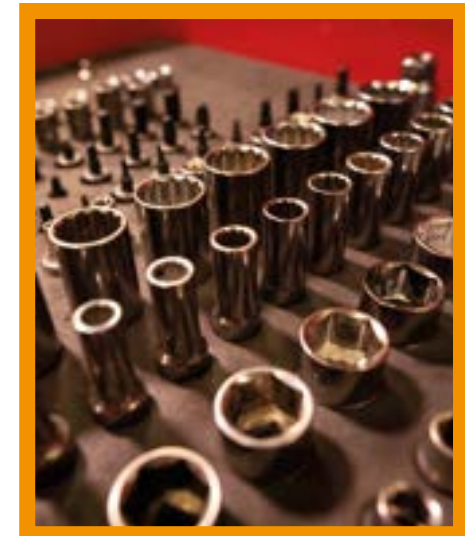
- IMI Level 1 Automotive Maintenance
- IMI Level 2 Light Vehicle Inspection
- IMI Level 2 Light Vehicle Maintenance and Repair

REAL-WORLD LEARNING

- Work on different projects and get to grips with a wide range of real vehicles at our specialist motor vehicle workshop.
- Learn from tutors with wide-ranging motor vehicle experience.
- Put your skills to the test with regional and national skills competitions.
- Be inspired by guest speakers with specialist knowledge.
- Put your skills into action on work placements.
- Go on industry visits to motor events and places like the Autosport Show at Birmingham NEC and the University of Derby's Motor Vehicle Department.

FUTURE CAREERS

- Diagnostics Engineer - **£37,933**
- Garage Manager - **£51,358**
- Mechanical Inspector - **£36,600**
- Motor Sport Engineer - **£33,905**
- Tyre and Exhaust Fitter - **£39,076**
- Vehicle Assembler - **£26,237**
- Vehicle Body Repairer - **£33,433**



Scan the QR
code for more
information



Want to be a sports coach, fitness instructor, or enjoy a career in the great outdoors? These programmes will provide you with the theory and practical, hands-on skills you need to kickstart your career in an exciting industry.



SPORTS, ADVENTURE, FITNESS & COACHING



CAREER PROSPECTS

- Many employers in this sector are small and medium-sized enterprises.
- Employment opportunities at local authorities, sports associations, and national governing bodies.
- There is an increasing number of new business start-ups due to a growing demand for alternative sports and fitness at a local level.

REAL-WORLD LEARNING

- Benefit from work experience, placements, and great links with local leisure/outdoor centres and employers.
- Learn at fully equipped gym facilities.
- Listen to industry guest speakers and specialised expert tutors.
- Possibility to boost your employability with additional activities and qualifications.
- Enter regional and national competitions.
- Potential to go on educational trips to local sports, coaching, and activity providers.

FUTURE CAREERS

- Leisure/Sports Manager - **£33,653**
- PT (Personal Trainer) - **£40,064**
- Sports/Leisure Assistant - **£22,500**
- Sports Nutritionist - **£23,500**
- Sports Therapist - **£28,626**
- Strength Conditioning Coach - **£29,287**

STUDY PROGRAMMES

- Level 3 Sport & Adventure



Want a career in the armed forces, government, emergency services, prison, security or voluntary services? Then our Uniformed & Protective Services programme is a great place to start.

UNIFORMED & PROTECTIVE SERVICES



CAREER PROSPECTS

- It's estimated that 5.83 million people work in the public sector.

REAL-WORLD LEARNING

- Develop your leadership, communication, teamworking, and problem-solving skills.
- Potential to go on residential weeks with the army, navy, or RAF, to learn more about life in the armed services.
- Hear from guest speakers from the armed forces, local government, and emergency and security services.
- Potential to boost your employability with extra qualifications.
- Grow your skills through work experience and work placement opportunities.
- Learn from tutors who have a wealth of industry knowledge.

FUTURE CAREERS

- Armed Forces Officer - **£45,870**
- Firefighter - **£39,462**
- PCSO - **£29,900**
- Prison Officer - **£34,617**
- RAF Engineer - **£36,900**
- Royal Marines Commando - **£42,000**
- Royal Military Police - **£36,512**
- Security Guard - **£27,917**

STUDY PROGRAMMES

- Level 3 Uniformed & Protective Services

Scan the QR
code for more
information



T LEVELS QUICK GUIDE

T Levels are new nationally recognised qualifications that follow GCSEs and are equivalent to 3 A Levels. These two-year programmes have been developed in collaboration with employers and businesses, so the content meets the needs of industry and prepares students for work, further training, or study.

T Levels mix classroom learning with 'on-the-job' experience during an industry placement of at least 315 hours.

T LEVELS

- Are worth UCAS points, with a T Level Distinction worth the same as 3 A Levels at A*.
- Are recognised by universities and other education providers, so you can continue studying if you wish.
- Involve more classroom study than Apprenticeships. You can experience industry while you continue your studies.

ENTRY REQUIREMENTS

Digital – a keen interest in technology and a minimum of a Grade 5 in Maths or Computer Science plus Grade 4s in English and at least 2 other academic GCSEs.

Early Years Education & Childcare – a minimum of a Grade 5 in English, a Grade 4 in Maths, plus a Grade 4 in at least 2 other academic GCSEs.

Health – a minimum of a Grade 5 in Maths, English Language and Science (triple or trilogy), plus 1 additional Grade 4 in an academic GCSE.

Electrical, Manufacturing, Processing & Control – you'll need a minimum of 4 Grade 5 GCSEs including Maths, English and Science.

Onsite Construction: Carpentry & Joinery – GCSEs in Maths and English at Grade 4 or above, or Functional Skills in both English and Maths at Level 2, plus 2 other GCSEs at Grade 4 or above, including a Science and a Design Technology based subject.



Scan the QR code for more information



Education & Early Years Early Years, Education & Childcare

- Early Years Practitioner
- Primary School Teacher
- Play Therapist
- Teaching Assistant
- Residential Childcare Worker
- Childminder
- Nanny
- Playworker
- Special Educational Needs Activity Coordinator

Health Health

- Nurse
- Midwife
- Children's Nurse
- Audiologist
- Speech and Language Therapist
- Phlebotomist
- Radiographer
- Operating Department Practitioner
- Occupational Therapist
- Healthcare Practitioner

Digital Production, Design & Development

- Software Development Technician
- Junior Developer
- Junior Web Developer
- Junior Application Developer
- Junior Mobile App Developer
- Junior Games Developer
- Junior Software Developer
- Junior Application Support Analyst
- Junior Programmer
- Assistant Programmer
- Automated Test Developer

Engineering Electrical, Manufacturing, Processing & Control

- CAD Designer
- CNC Operator
- Design Engineer
- Engineering Professional
- Engineering Technician
- Maintenance Engineer
- Engineering Trainer/Teacher
- Quality Assurance Engineer
- Structural Engineer
- Sales Engineer
- Process Engineer

Carpentry & Joinery Onsite Construction: Carpentry & Joinery

- Carpenter
- Joiner
- Builder
- Kitchen Fitter
- Construction Manager
- Wood Machinist
- Building Surveyor
- Restoration/Repro Carpenter
- Manufacturing Manager

Coming soon: Culinary T Level

- Chef de Partie
- Senior Production Chef
- Bar Manager
- Catering Manager
- Chef
- Food Blogger
- Restaurant Owner
- Food Reviewer
- Tourism Manager
- Customer Service Manager

APPRENTICESHIPS QUICK GUIDE

Want to get a job, earn a salary, gain real industry experience, and study at college at the same time? Then an Apprenticeship is for you. Work in industry as a paid member of a team with programmes lasting between one and four years. Develop new skills, grow your knowledge and gain a recognised industry qualification, so you can progress your career or move into Higher Education.

SUBJECT AREAS

- Accounting
- Business & Customer Service
- Carpentry & Joinery
- Catering & Hospitality
- Education & Childcare
- Engineering
- Hairdressing, Beauty & Spa

WHAT THEY INVOLVE

- **Learn on the job** – spending most of your time with your employer, you'll gain hands-on experience, earn a salary, and pick up the skills and knowledge you need to succeed.
- **College study** – spend at least 6 hours a week studying towards a qualification.
- **Maths and English** – develop and align your Maths and English skills to your job.
- **End Point Assessment (EPA)** – guided by your workplace mentor and your college instructor-mentor throughout your Apprenticeship, you'll develop the knowledge, skills and behaviors (KSBs) you'll need to pass your EPA and gain an industry-recognised qualification.

Endpoint assessments vary, but usually include a practical assessment, multiple choice exam, and a professional discussion or presentation.

WHO CAN APPLY?

- Anyone aged 16 or over, or retraining adults.
- You must have the right to work in the UK and live in England.
- Ideally candidates will have a Maths and English qualification.

Contact our Apprenticeships Team for more information.



HOW CAN YOU PROGRESS YOUR CAREER?

Apprentices and employers work within a set Apprenticeship 'Standard', so when you complete the programme, you'll have the knowledge, skills, and behaviours to succeed in your chosen career.

You'll become industry qualified whilst working within your chosen field. When completed, you can then look to progress onto a higher-level Apprenticeship if you wish. These are more in-depth and specialist, often focusing on supervisory and managerial roles.

As with a Level 2 or 3 Apprenticeship, completing a higher-level or Degree Apprenticeship doesn't mean training costs for the apprentice. There are no tuition fees involved!

We can help you find an employer if you don't have one:

Latest Apprenticeships
www.blc.ac.uk/vacancies

Get matched to an employer
www.blc.ac.uk/apply

"Working and completing my training at BLC has given me a wide variety of opportunities and areas that I can progress into. I've developed lots of new skills and learnt about processes and practices first-hand. I've been able to assist in multiple different departments and it's really helped to build my confidence."

FRANCESCIA DAVIES
HAIR & BEAUTY BUSINESS APPRENTICE

Scan the QR code for more information



STEP UP WITH BLC QUICK GUIDE

Our Step Up programmes have been created by a team of dedicated and specialised staff, taking a holistic and learner-focused approach around life, resilience, education, and employment skills.

They provide an environment which is structured and secure with the space to grow, enabling learners to ultimately step up to reach their full potential in both their learning and personal life.

We use a variety of effective teaching methods and settings, with clear objectives identified to each individual's needs.



STEP UP

Our Step Up programme works towards a Level 1 qualification and is aimed at 16–18-year-olds (up to 24 with an EHCP), who wish to increase their key learning and development skills, to boost progression and opportunities in their future career pathway. Some of the studies will also include managing your personal finances, work-based experience, and developing a candidate project.

Step Up includes continual studies in Digital Skills, Maths, and English, alongside an Employability (Level 1) qualification and work experience.

Entry requirements

No formal entry requirements.

Where next?

Vocational programme, Supported Internship, Traineeship or employment.



STEP UP TO INDEPENDENCE

Step Up to Independence is based around preparing for adulthood and is aimed at learners working between Entry Levels 1–3 (pre-GCSE), to gain a set of core skills that will prepare them for a more rewarding and independent future.

It's designed to meet the specific needs and aspirations of individual learners, through practical learning activities that increase independence. This may include areas such as developing communication skills, being an active member of the local community, and taking ownership of various strategies.

What qualifications will you achieve?

Maths, English, and Entry Employability skills qualifications.

Entry requirements

No formal entry requirements.

Where next?

Step Up to Work & Life Skills.

STEP UP TO WORK & LIFE SKILLS

Step Up to Work & Life Skills is aimed at 16–18-year-olds (up to 24 with an EHCP), or those progressing from Step Up to Independence, who wish to increase their work, learning, and life skills, and work upto a Level 1 qualification.

This includes continual studies of Digital Skills, Maths, and English, and focuses on supporting students to identify their key strengths and attributes, reflecting on not just work, but also personal interests to help guide their future career goals. Learners will boost their CVs by taking part in work experience with local employers, with the option of support within the workplace with a Job Coach.

Entry requirement

No formal entry requirements.

Where next?

Further vocational studies, Traineeship, or Supported Internship work.

Scan the QR code for more information





SUPPORTED INTERNSHIP QUICK GUIDE

A Supported Internship is aimed specifically at students with Education, Health and Care Plans up to the age of 24.

The programme can help them on the path to success and gain a Level 1 employment skills qualification.

The programme's primary aim, wherever possible, is to support young people to move into paid employment. The Supported Employment Team at BLC will work closely with the interns, their circle of support, and host employer, to ensure optimal opportunity for gaining paid employment (including, where appropriate, self-employment).



Scan the QR code for more information

A TIMETABLE FOR AN INTERN COULD INCLUDE:

- Workplace training with a Job Coach.
- Mentoring to start a business.
- Maths, English, and Digital Skills development.
- Personal and social development.
- Employability skills.
- Job club.

Learners are fully supported in the workplace with a Job Coach. This will gradually reduce over time, supporting them to become fully independent.

Students will also work towards developing their work-related and essential communication skills, health and safety in their work, and how to deal with common problems that may occur.

Entry requirements

There are no formal entry requirements. All learners are considered on an individual basis and will take part in an informal assessment as part of the application process.

Where next?

Employment.

TRAINEESHIPS QUICK GUIDE

Scan the QR code for more information



If you would like to explore a variety of sectors for employment and increase your employment skills, a Traineeship programme could be for you. A Traineeship will prepare you for an Apprenticeship and your future career. It will also help you get work ready and apply for job opportunities.

WHAT DOES A TRAINEESHIP INVOLVE?

- **Work preparation training** - this includes CV writing, interview preparation, job searching, and interpersonal skills.
- **Work placement** - you'll gain valuable skills and meaningful work experience with a local employer.
- **Maths and English** - we'll support your skill development if you haven't achieved GCSE Grades 9/A*- 4/C or a Level 2 Functional Skills qualification if you're aged 19+.
- **Further qualification** - Work towards a Level 2 Award qualification in employment skills.



WHO CAN APPLY FOR A TRAINEESHIP?

- Aged 16-24.
- Not in a current job.
- Little work experience.

While the work placement part of a Traineeship is unpaid, you'll be able to access financial support schemes if eligible.

HOW TO APPLY

We're excited that you've chosen to join a programme here at BLC. There are just four simple steps:

1. APPLY ONLINE

Scan the QR code to head to our online application form. If you'd like some help applying, you can call our Admissions Team on 0800 074 0099, or email enquiries@blc.ac.uk

Our Admissions Team will process your application. They may get in touch with you if they need any extra information using the email address you provided on your application.

2. YOUR INTERVIEW

Once we've processed your application, we'll get in touch to arrange your interview. This will either take place on one of our campuses, over the phone, or via Microsoft Teams.

Our tutors will talk to you about:

- You and your interests.
- What motivates you.
- Why you chose to apply for the programme.
- Your predicted or previous actual grades.
- Any additional support you may require.

3. YOUR OFFER

After your interview you may receive an offer of a place for your programme of choice, along with any conditions (e.g. GCSE grades).

4. ENROLMENT & INDUCTION

If you're offered a place on one of our programmes starting in September, we'll send you an enrolment pack with an invitation to enrol. You'll also receive information about applying for a bus pass, and how to apply for a bursary if you're eligible.

We'll then keep in touch with you right up to enrolment, so you stay up-to-date with everything happening at BLC.

For your enrolment you'll need:

- One form of ID (Passport, Driving Licence, NI Card or Debit/Credit Card).
- Exam results.
- Completed permission and contact form.
- A wage slip or proof of any benefits you may receive if you're aged 19+.
- Residency documents if you were born outside of the UK.

If you enrol onsite, you'll be given information about:

- Your first day at college.
- Support services.
- Your induction period.

Our emails may get diverted to your spam or junk folders, so make sure to check for us in there and save us to your contacts!



Scan the QR code to apply



PRACTICE APPLICATION FORM

SECONDARY SCHOOL ATTENDED

Name of last school _____
 Address _____

 Postcode _____
 Tel No. _____
 Attended from _____ to _____

COURSES

Which campus are you looking to study at?

Buxton ☐ Leek ☐ Derby ☐

Would you like to study for an Apprenticeship?

Yes ☐ No ☐

1st choice course _____

2nd choice course (optional) _____

NOTE: Only students who will be aged under 18 on 1 September need to fill in this section.

Name of parent/guardian _____

Address of parent/guardian _____

Postcode _____

Home Tel No. _____

Daytime Tel No. _____

PERSONAL DETAILS

Gender Male ☐ Female ☐ Other ☐

Title _____

First Name _____

Surname _____

Address _____

Postcode _____

Tel No. _____

Mobile _____

Email _____

National Insurance No. _____

Date of birth (dd/mm/yyyy) _____

Nationality _____

Country of birth _____

QUALIFICATIONS

| Level | Subject | Estimated Grade | Actual Result Grade | Date |
|-------|---------|-----------------|---------------------|------|
| | | | | |
| | | | | |
| | | | | |
| | | | | |
| | | | | |
| | | | | |
| | | | | |
| | | | | |
| | | | | |

WORK EXPERIENCE

At school/voluntary or other paid work

Buxton & Leek College welcomes applications from students with learning difficulties, disabilities, or medical conditions, and aims to provide appropriate support for their specific needs. It is advisable to discuss any additional support needs you may have. Any information given is confidential and will not affect your application.

- ☐ I don't have a disability and I'm not aware of any additional support requirements for my studies
- ☐ I have Dyslexia
- ☐ I am blind/partially sighted
- ☐ I am deaf/have a hearing impairment
- ☐ I am a wheelchair user/have mobility difficulties
- ☐ I need personal care/support
- ☐ I have mental health difficulties

Do you have a disability or require support in an area not listed above (such as numeracy, language difficulty)?
Please give us more details:

Do you have an unseen disability (such as Diabetes, Epilepsy, Asthma, Aspergers Syndrome)?
Please give us more details:

Are you 16-19 and living independently/in care/with foster parents/in supported lodgings?
If yes, please give us more details:

REFERENCES

(Not to be filled in by applicants currently at school)

Name

Position/Occupation

Address

Postcode

Daytime Tel No.

Privacy Notice: We use the information on this Application Form to assess your suitability for the course you have applied for at Buxton & Leek College, part of the University of Derby (as Data Controller), we may also use this data to consider and advise you of an alternative course which may be available to you.

We share this data with other departments within Buxton & Leek College and the University of Derby, to ensure fair assessment of your application and to provide relevant support services. On successful acceptance to Buxton & Leek College, your information will be converted to create a student record.

We may contact you to request any additional information that we require to enable us to consider your application and support you through to enrolment and attendance on your programme of study.

For the purposes of obtaining a reference, your data may be shared externally with your most recent educational institution and local Multi-Agency Teams. Your data may be shared with a local authority such as Staffordshire County Council, Stoke-on-Trent City Council, High Peak & Staffordshire Moorlands Council Alliance and Derbyshire County Council for monitoring purposes, to ensure all school leavers have an appropriate post-16 education, employment, or training option in place. Your data may also be used for statistical analysis. It will not be used for any other purpose.

The information you supply on this Application Form will be held and processed in line with the Data Protection Act 2018, GDPR and subsequent legislation. Our lawful basis for processing this data is legitimate interest.

We retain this application data for two academic years, after such time it will be securely deleted/destroyed.

PLEASE NOTE that your data is required to be processed as detailed above to progress your application, if you do not agree to your data being used for the stipulated purposes please contact us at gdp@derby.ac.uk and do not submit your application.

We would like to send you further information about our courses and about studying at Buxton & Leek College. If you would like us to send you this information please select your communication preferences:

Email ☐ Post ☐

Our lawful basis for processing this data is consent.

As a data subject you can request withdrawal of consent at any time.

Our Data Protection Officer is James Fussell on (01332) 591056.

Our Deputy DPO is Helen Rishworth on (01332) 591954.

Alternatively you can email gdp@derby.ac.uk

Further information on how we handle your information can be found here on our website www.derby.ac.uk/its/datagov/privnotice.

How did you hear about the College and the course?

- ☐ School Open Day
- ☐ College Advice Day
- ☐ Careers teacher or other teacher from school
- ☐ Friend or family
- ☐ Our website
- ☐ Careers convention at school
- ☐ Careers service
- ☐ Visiting or calling the college
- ☐ Newspaper or other advertisement
- ☐ Other

DECLARATION

Print name

Signed

Date

Post or take this completed form to either:

BUXTON CAMPUS
BUXTON & LEEK COLLEGE
ADMISSIONS DEPARTMENT
1 DEVONSHIRE ROAD, BUXTON, DERBYSHIRE, SK17 6RY

LEEK CAMPUS
BUXTON & LEEK COLLEGE
ADMISSIONS DEPARTMENT
STOCKWELL STREET, LEEK, STAFFORDSHIRE, ST13 6DP

OPEN EVENTS

| | |
|---|---------------|
| Saturday 30th September 2023 | 10:00 - 13:00 |
| Thursday 16th November 2023 | 17:00 - 19:30 |
| Thursday 8th February 2024 | 17:00 - 19:30 |
| Saturday 20th April 2024 | 10:00 - 13:00 |
| Thursday 16th May 2024 | 17:00 - 19:30 |
| Saturday 22nd June 2024 (Community Open Event) | 10:00 - 13:00 |

BOOK YOUR PLACE
BLC.AC.UK/OUR-EVENTS



WANT TO KNOW MORE?

Meet Laura and Jenn, our incredible Schools Liaison Team. They are here to help you. You'll probably see them at school assembly in your final year. They'll be more than happy to answer your questions and give useful advice.

Contact them at enquiries@blc.co.uk

All information within this prospectus was correct at the time of going to print. Please see our website at www.blc.ac.uk for any updates.

FUTURE
YOU.

