

STUDENT

2024/25

HANDBOOK



What information does the university collect:

Information about your engagement with and use of University services, such as the Library, sport and recreation, as well as information on the provision of advice and support, such as the Careers Service.

If you use a University email address and other Microsoft Office 365 services, then we collect and log data about your use of the service. Our digital telephony system logs incoming telephone numbers, these numbers may not be linked to your student record.

The information in this Student Handbook was correct at the time of publication, but may be subject to change due to ongoing government guidance. Please refer to blc.ac.uk or contact your tutor or Progress Coach for the latest information.

A BLC WELCOME

BUXTON

Email: studentcentrebuxton@derby.ac.uk
Tel: 01298 330644

LEEK

Email: fecurricusupport@derby.ac.uk
Tel: 0800 074 0099



As Part of the University of Derby, Buxton & Leek College is driven by the following Strategic Framework:

OUR PURPOSE
From the heart of England, we empower people across the globe to achieve their potential and make a positive contribution to society.

OUR PROMISE
Everything we do is driven by delivering excellence and opportunities for our students, staff and region.

OUR VALUES

- Value people: We are true ambassadors of our purpose and promises.
- Bold: We create a reputation where industry relies on us for their potential, innovation and gateways to success.
- Future focused: Our determination, knowledge and positive attitude keeps us engaged in the world around us and ahead of the game.
- Brilliance: We create stimulating environments that transform prospects. We believe we all make the difference.

CONTENTS

Useful Numbers	4
24/25 Academic Year	6
BLC Invest	7
What you can expect from us	8
What we can expect from you	10
Staying Safe	12
Safeguarding Students	14
British Values	16
Transport	17
Finances	18
Attendance	20
Careers	22
Progress Coaches	23
Additional Learner Support	25
Facilities	26
Places to Eat and Drink	28
Salons and Spa	29
Enrichment	20
Student Voice	32

USEFUL NUMBERS

General Enquiries 0800 074 0099 The Hub Library (Leek) 01538 322020 The Devonshire Library (Buxton) 01298 330633

Leek Transport 01298 330330

Buxton Transport 01298 330644

Derbyshire Public Bus Services 0871 200 2233

Snowline 01332 597669

Tuition Fees: fe_financeandfees@bhc.ac.uk



Student Finance England: 0300 100 0619

Care to Learn: 0300 303 8610 Bursaries/ Funding: 01298 330817

Childline 0800 1111

CONNECT WITH US

Search BuxtonLeek and keep up to date with the latest from the College.

-  Like us
-  Follow us
-  See us
-  Connect with us
-  Capture us
-  Snap us



2024/25 ACADEMIC YEAR

AUTUMN TERM 2024/25

Term start: 02 SEPTEMBER

Half term: 28 OCTOBER - 01 NOVEMBER

Term end: 18 DECEMBER

SPRING TERM 2025

Term start: 06 JANUARY

Half term: 17 FEBRUARY - 21 FEBRUARY

Term end: 11 APRIL

SUMMER TERM 2025

Term start: 28 APRIL

Half term: 26 MAY - 30 MAY

Term end: 27 JUNE

PUBLIC HOLIDAYS:

26 AUGUST, 25 DECEMBER, 26 DECEMBER, 01 JANUARY,
29 MARCH, 01 APRIL, 06 MAY, 27 MAY

Check your timetable regularly for the latest updates.

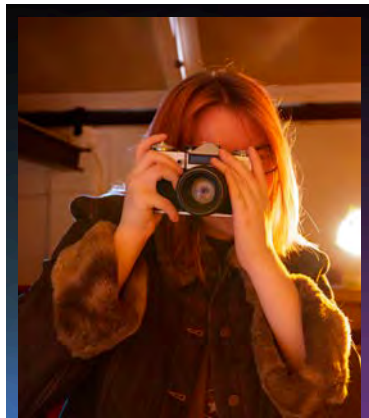
MY KEY DATES:

UCAS DEADLINES

Application

Application submitted

Respond to offers



BLC

INVEST

WE WANT ALL STUDENTS AND APPRENTICES
ACROSS THE COLLEGE TO BE THE BEST THEY CAN
BE, AIM HIGH AND HAVE A POSITIVE EXPERIENCE

This ties in with the University of Derby's core values, which are:

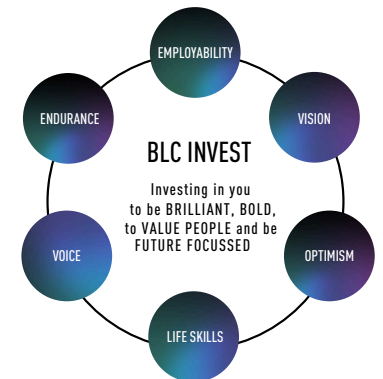
Brilliant Future
Focused

Bold Value
People

We will invest in all students and apprentices but equally expect all students and apprentices to invest in themselves. We want all students and apprentices participate in **EVOLVE** activities, to help develop their skills, behaviours and attitudes help make successful futures. These include:

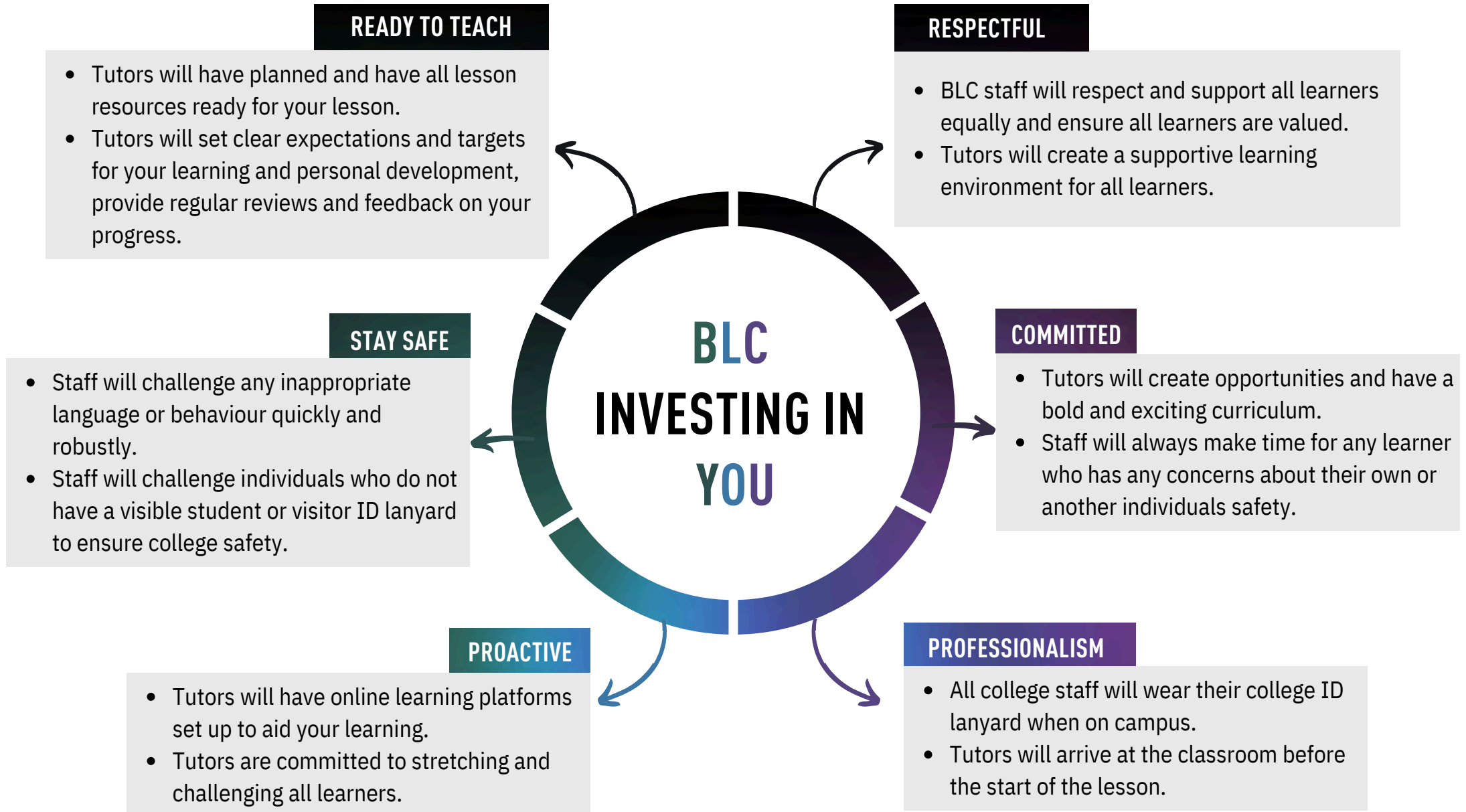
Employability
Optimism
Voice

Vision Life
Skills
Endurance

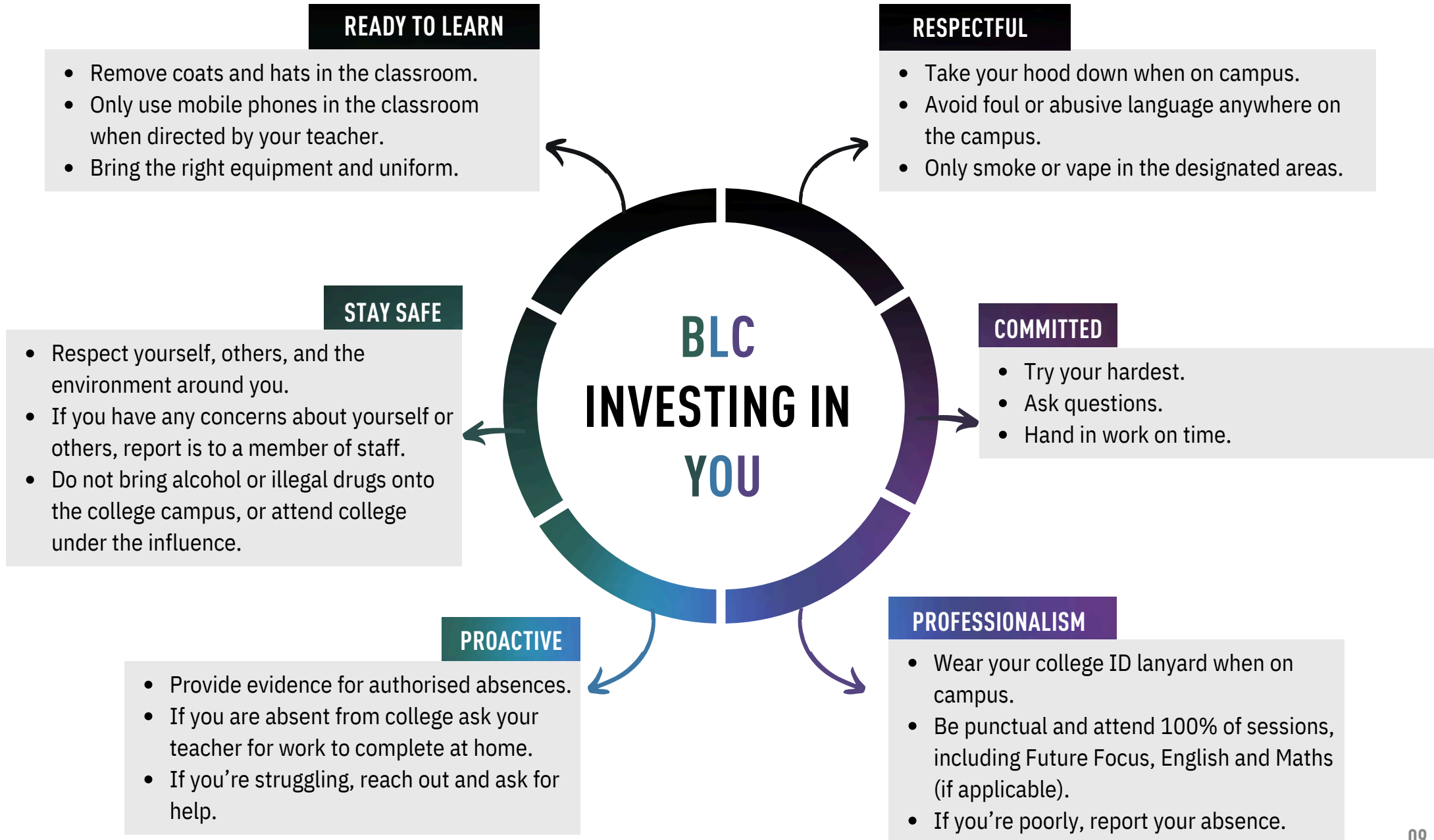


We will run a range of activities across the programme to help students and apprentices develop and enhance their skills in these areas. Students will be asked to complete a self-assessment as part of their career planning to help identify what skills they wish to develop with the support of their course tutor.

WHAT YOU CAN EXPECT FROM US



WHAT WE CAN EXPECT FROM YOU





STAYING SAFE

We aim to be a safe and secure College, and maintain our reputation of being friendly and welcoming. You can help us to keep you and the College safe by following these simple tips.

Read the Fire & Evacuation procedures; and when the fire alarm sounds, stay calm, follow instructions from staff and leave quickly by the nearest exit. Wait in the marked assembly point until told otherwise. A member of staff will tell you when you can re-enter the building.

Always wear your ID card and lanyard. This allows you access in to the College and the ability to use Library materials. It also identifies you as a student.

If you have lost your ID card you can obtain a replacement card from the Student Centre in Buxton or Reception in Leek. You may incur a replacement fee if you lose either your ID or your lanyard.

Try to avoid situations that make you feel unsafe but if you do feel unsafe for any reason at College report your concerns to your Tutor or a member of the Learner Journey Team immediately.

Wear appropriate protective clothing and equipment when in workshops or practical sessions - your Tutor will tell you at induction what this means for your course. If you hurt yourself or have an accident tell your Tutor or Reception and they will call a first aider to help you.

HEALTH AND SAFETY

Buxton & Leek College strives to achieve and maintain the highest standards of health and safety for all employees, contractors, students and members of the public who may be affected by its activities and will pursue continuous improvement in these standards.



FIRST AID

There are first aid points and trained first aiders at all sites; any member of staff will be able to find them for you. If you have even a minor accident make sure you report it so that it can be recorded and action taken to prevent it happening in the future. In case of a first aid emergency:

- contact any member of staff and a First Responder will be called.
- or, ring Security directly on **01332 597777** and tell them which Campus you're calling from.

FIRE ALARM

It's essential that everyone does their best to prevent fires and in the event of a fire, knows what action to take. If you're a disabled student with mobility restrictions you will need a Personal Emergency Evacuation Plan (PEEP) which an ALS Tutor can put in place for you. Please make sure you become familiar with the fire exit signs in all your classrooms, around the building and in your workplace. If you have any concerns let your tutor or assessor know.

SMOKING

Smoking is only permitted in designated smoking shelters at Buxton and Leek Campus. Smoking of cigarettes or e-cigs/ vapes is not allowed in any of the buildings or around doorways of the College.

If you would like help to stop smoking, please contact the Learner Journey Team.

SECURITY

The security team is located at both Buxton and Leek sites with their priority being the safety and wellbeing of our students, staff and visitors. For more information on their services please visit their website: derby.ac.uk/about/organisation/estates/security

LOST PROPERTY

Any lost property will be held at the Security Lodge at Buxton or Reception at Leek. If you lose a memory stick this will be held in the learning spaces at the Devonshire Library in Buxton or The Hub in Leek. If you have to bring valuables to College, be careful and keep them as safe as you can; please remember they are your responsibility.

SAFEGUARDING STUDENTS

Safeguarding is the term given to the College's responsibilities to promote your wellbeing and make sure that you feel secure and safe.

We have particular responsibilities relating to our learners under 18 years and learners with learning difficulties and disabilities, but we're also responsible for ensuring the wellbeing of all our adult learners. The University of Derby Safeguarding Team has a child protection and vulnerable adults policy and a team of Safeguarding Co-ordinators.

We review whether we're promoting your safety and wellbeing and would like to hear from you if you've any comments or suggestions about this.

If you have a concern about your own, or others' security, safety and wellbeing then please contact one of our Safeguarding co-ordinators on **01538 322100**, or you can also report concerns anonymously using MyVoice by scanning the QR code.

Safeguarding Policy Document

We are dedicated to ensure that you are, and feel safe and secure during your time with us.

Our commitment is highlighted in our safeguarding policy:

<https://www.blc.ac.uk/wp-content/uploads/2024/04/PLCY-Safeguarding-Policy-v1-UoD.pdf>



If you feel you are being bullied, see or know of anyone being bullied tell a member of staff straight away

BULLYING, CYBER BULLYING AND HARASSMENT

At Buxton & Leek College we do not tolerate bullying, which includes:

- Insults or threats made in person or by Social Media.
- Displaying or circulating material that could be hurtful or offensive to others.
- Shouting and verbally intimidating people.
- Physically hurting someone including pushing, kicking, hitting, shoving.
- Discriminatory behaviour including racist, sexist and homophobic.

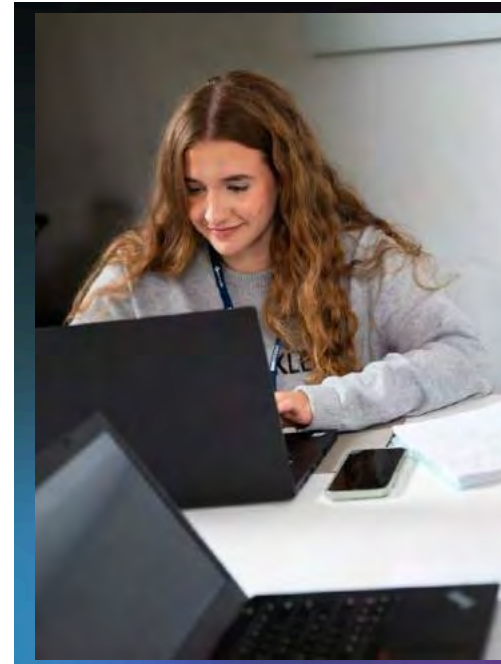


REMEMBER:

Employers can see what you put on Facebook and check your other social media so always think carefully about what you write.

STAYING SAFE ONLINE

- Don't add people you don't know to your WhatsApp, Snapchat, Messenger or Facebook friends list
- Check your privacy settings - who can see your info?
- Never give any personal details online
- If you are being cyberbullied, keep all evidence and tell a trusted adult or use the 'report it' button
- Block anybody who sends you stuff you don't like
- Don't reply to abusive emails, messages or tweets
- Regularly check and clean out your friends list on social networking sites
- Think before you send a message - it could seem harsh or hurtful to someone else
- Never meet anyone you have only met online
- Think twice before putting your photo online - people can copy it, change it and send it to others
- If you receive a message while on a social networking site that you think is unacceptable - use the report abuse button on the site.



Essential addresses to stay safe online

Childline:

www.childline.org.uk

Twitter Help Centre:

www.support.twitter.com

UK Safer Internet Centre:

www.safeinternet.org.uk

Snapchat Safety Centre:

www.snapchat.com/safety

Get Connected helpline:

www.getconnected.org.uk

Professional online safety:

helpline@saferinternet.org.uk

Revenge porn helpline:

help@revengepornhelpline.org.uk

Report abuse and grooming:

www.ceop.police.uk/ceop-report

Report child abuse images to Internet Watch

Foundation:

www.iwf.org.uk

BRITISH VALUES AND PREVENT

British Values are embedded through our policies & procedures and are defined by the Government.

Students will develop an understanding of these values through their work in lessons, Evolve programme, enrichment opportunities and College events, examples are outlined here:

DEMOCRACY

e.g. students can elect a course rep to represent them on key issues, student voice including online surveys and focus groups.

RULE OF LAW

e.g. following H&S requirements, arriving on time and attending lessons, wearing lanyards, completing and handing work in on time.

INDIVIDUAL LIBERTY

e.g. tutorials on Prevent & British Values, one to one guidance and individual learning plans.

MUTUAL RESPECT

e.g. adhering to College code of conduct & behaviour policy, behave appropriately and look after the College environment.

TOLERANCE OF THOSE WITH DIFFERENT FAITHS AND BELIEFS

e.g. themed & national events, celebrating equality & diversity, space for all faiths and none.

PREVENT

The Prevent duty is to ensure that the College safeguards students from becoming radicalised, which is the process of when a person comes to support terrorism and is drawn into violent extremism and the holding of extremist views, which refers to vocal or active opposition to the fundamental British Values. Buxton & Leek College enables all students to:

- acquire an appreciation of and respect for their own and other cultures to further tolerance and harmony between different cultural traditions
- respect for democracy and support for participation in the democratic processes, including respect for the basis on which the law is made and applied in England.

There is a duty to ensure that those identified with vulnerabilities are given appropriate advice and support. Some of the signs that a student could become radicalised are as follows:

- Isolating themselves from friends and family.
- Talking as if from a scripted speech.
- Unwillingness or inability to discuss their views.
- A sudden disrespectful attitude toward others.
- Increased levels of anger.
- Increased secretiveness, especially around internet use.

Safeguarding our students, staff and visitors is important to us. If students need support or there are concerns that someone is being radicalised you can report and access support through our safeguarding co-ordinators at the college.

SUPPORTING YOU WITH TRANSPORT

Buxton & Leek College offer a network of buses during term time.

Early morning collection and late afternoon buses from College Campuses run to a variety of destinations. Routes and timetables can be found on the College website.

Some bus routes will be subject to charges, for more information please visit our website at blc.ac.uk/transport

Students will be expected to follow the transport behaviour code, for more information visit blc.ac.uk/transport

If you have any questions about bus passes or bus pass payments, please contact the FE Curriculum Support Team:

Email:

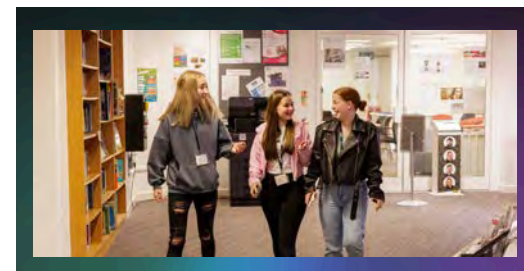
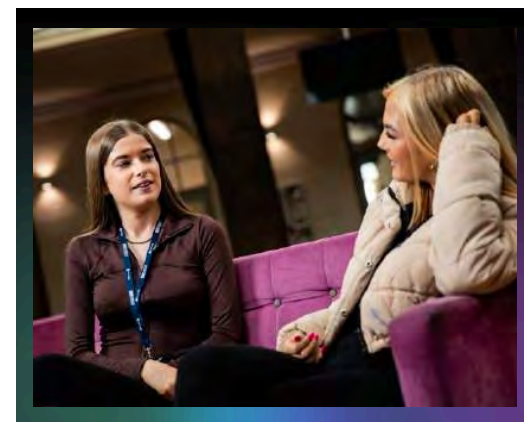
fecurricusupport@derby.ac.uk

Phone:

0800 074 0099 (option 1)

Visit:

the Student Centre at Buxton Campus or Leek Campus Main Reception.



18 SUPPORTING YOU WITH FINANCES

During your time at Buxton & Leek College, there may be things you have to pay for to fully engage with your course, including:

- Travel to and from college
- Food and drinks if you're on campus
- Books, uniform, kit, or equipment
- Professional memberships
- Childcare for dependents
- UCAS application
- Essential Field trips/additional courses
- Tuition fees

You need to plan ahead and budget for these, or depending on your circumstances, you could be eligible for financial support. This may be limited to students of a specific age group, studying certain subjects, or living in certain areas. If you qualify you might be eligible for:

- A bursary – which you wouldn't have to pay back.
- A loan – which you would have to pay back.
- A charitable trust to purchase goods on your behalf.

SUPPORTING YOU WITH FUNDING

We're granted limited funding each academic year to issue out as bursaries on a first-come, first-served basis. Eligibility for one will depend on your age, course, household income, residency criteria, and costs associated with the course for which you require support.

These bursaries may be available for learners on full-time/part-time study programmes, supported internship or traineeships:

SUPPORT WITH TUITION FEES

- Aged 16-18 years
 - You won't need to pay tuition fees (Residency Criteria will apply).
- Aged 19 years or over
 - Level 3 courses - your course could be free, depending on criteria such as your age and chosen qualification.
 - Level 4 courses - tuition fees are more likely to apply. However, an Advanced Learner Loan may be available.
 - Level 2 courses & below - your tuition fees may be waived depending on your circumstances.

If you do have to pay tuition fees, you may be able to take out an Advanced Learner Loan to cover the cost of your studies. This loan isn't means tested, and as it's government funded, you don't have to pay anything back until you're earning £25,000 or more a year

(Residency Criteria will apply). Please note that the thresholds change each year. Please get in touch with us to discuss your individual circumstances.

ADULT LEARNER FUNDS

19+ Learner Support Fund & Advanced Learner Loan Bursary
If you're aged 19 and over, and from a low-income household or facing financial hardship, you could be eligible for financial support from this bursary to aid with additional course costs.

DISCRETIONARY LEARNER SUPPORT

Buxton & Leek College are able to support some students with up to 75% of their course cost where other forms of funding are unavailable. This will be via the 19+ Discretionary Learner Support Fund.

16-19 BURSARY

Learners aged 16 - 19 If you're aged between 16-19 and you're from a low-income household, or facing financial hardship, you could be eligible for financial support from this bursary to help with additional course costs. Learners who require childcare support will also need to apply for the government Care to Learn Scheme.

FREE COLLEGE MEALS

Learners may be eligible for a free meal on each full timetabled day they are due to be with us. Eligibility will depend on age, course of study, and receiving certain benefits.

Got a question about our fees or financial support?
Call us on 0800 074 0099 and ask to speak to our Fees team regarding Tuition Fees or our Student Money and Welfare Advisor if you want any further information about Bursaries
Alternatively email E:
Financialsupportfund@blc.ac.uk
More information
www.gov.uk/advanced-learner-loan
<https://www.blc.ac.uk/funding-bursaries-loans-14-18-2/>

VULNERABLE YOUNG PERSON BURSARY

You could be eligible for this bursary if you're aged 16-18, in care, a care leaver, living independently (receiving certain benefits), or have children of your own.

ATTENDANCE PROCEDURE

We expect 100% attendance from all of our students. If you fail to achieve consistently high attendance, it may affect progression to a higher-level programme and your chances of successfully passing your programme.

Going on holiday during term time is not a reasonable excuse to miss your lessons. We would also expect you to book appointments with the doctor/dentist outside of College wherever possible. You will be expected to provide evidence of any appointments that cause absence. If you engage with our Support Services, you can overcome barriers to good attendance and succeed.

However, if you:

- Need to leave College during the day and will therefore miss a lesson, you should inform the member of staff leading the lesson, your Progress Coach or Main Reception, who will make a record on eTrackr or Smart Assessor and notify key staff members
- Are late, please go straight to your lesson - persistent lateness will breach the INVEST code of conduct and lead to disciplinary action
- Know in advance that you are going to be away (e.g. at a hospital appointment) you will need to complete an authorised absence form which will need to be signed by parent/carers if you are under 18- (change to) Present suitable evidence to your Progress Coach, such as an appointment confirmation email or letter from a medical professional
- Are ill while you are at College and have to go home, inform your Progress Coach and Programme Tutor as soon as you can
- Have a problem outside College, talk to your Progress Coach or a member of the Learner Journey Team as we can arrange for you to talk to someone who can give you specific help and support, such as a Counsellor, Chaplain or referral to an external organisation

You can find out absence and attendance policy online at: [blc.ac.uk/school-leavers/student-support-2-2](https://www.blc.ac.uk/school-leavers/student-support-2-2)

If you can't attend college for any reason or have a problem you need to discuss, you should: Contact the absence line on 0800 074 0099. If you don't contact the college to inform us that you won't be in this could lead to disciplinary action.

- An individual with parental responsibility must contact the absence line on 0800 074 0099 on the morning of the absence (if you require a full day).
- An individual with parental responsibility could complete an absence form, giving full and appropriate details here: <https://www.blc.ac.uk/absence-form/>
- If they do not contact the College to inform us that you won't be in, this could lead to disciplinary action, which could lead to withdrawal from your programme.
- Ideally, we still desire to maintain links with your parent/ carer after you turn 18, but you must take full responsibility for reporting absences on a daily basis. You are now able to phone the absence line or complete the absence form yourself.
- Progress Coaches pro-actively track and monitor your attendance. If your absence is not reported, this will trigger a phone call or other contact method to your parent/ carer or you (if you are over 18)



SUPPORTING YOU WITH INDUSTRY PLACEMENTS & WORK EXPERIENCE

Our team are committed to sourcing quality-assured and meaningful placement opportunities for all students.

Placements are an integral part of your study programme. There are two main types of placements that you may have to complete as part of your course: Industry Placement Project (long-term, requires you to complete 315 hours in industry) or Industry Experience (short-term, hours can vary).

The placement will be meaningful, meaning it will relate to your course and you will be able to apply your in-class knowledge in a real industry setting. You will gain insight and understanding to help inform your decision-making as to your future career choices and progression plans.

We will meet you in classroom sessions to ensure you are industry ready prior to your placement start date and remain a point of contact throughout your placement to provide support.

We are a professional service, open in and out of term time, so you can access us throughout the year (even when you are not in College). You will also learn how to write about your Industry Placement or Experience on your CV and discuss your placement in future job interviews.

Come and chat to us about the opportunities available to you at our drop-in at either Buxton or Leek Campus.

What are the benefits of completing your industry placement or experience?

It is a great opportunity for you to 'try out' your chosen industry, shadow industry professionals, learn about an organisation you are interested in and therefore gain insight and information that will support you in making career decisions. You will develop your transferable skills e.g teamworking, leadership, problem-solving to list on your CV with examples and discuss at future interviews.

Become more independent, step out of your comfort zone, build confidence, and learn more about yourself by identifying your strengths and weaknesses.

Potentially secure progression pathways such as a long-term placement, apprenticeship, full-time job opportunity at the end of your course or part-time employment whilst studying.

Completing your placement will ensure you have the essential criteria required to meet job specifications and compete for the job that you would like to secure after College because you will have the relevant examples and experience to do so.

WORK PLACEMENTS:

Phone: 01298 330443

Email: placements@bhc.ac.uk

SUPPORTING YOU WITH PROGRESS COACHES

If you are on a full time programme you will be assigned a Progress Coach who will meet you regularly to:

- Deliver Future Focused sessions
- Support you with your 'next steps', whether this is employment, further/higher education or an apprenticeship
- Track your attendance levels
- Work with you to set your personal targets.
- Support you to achieve your overall goals.
- Help you to overcome any academic or personal issues.
- Refer you for any additional support should you require it.

Find out more at:

bhc.ac.uk/school-leavers/student-support-2-2

Get in touch with your
progress coach

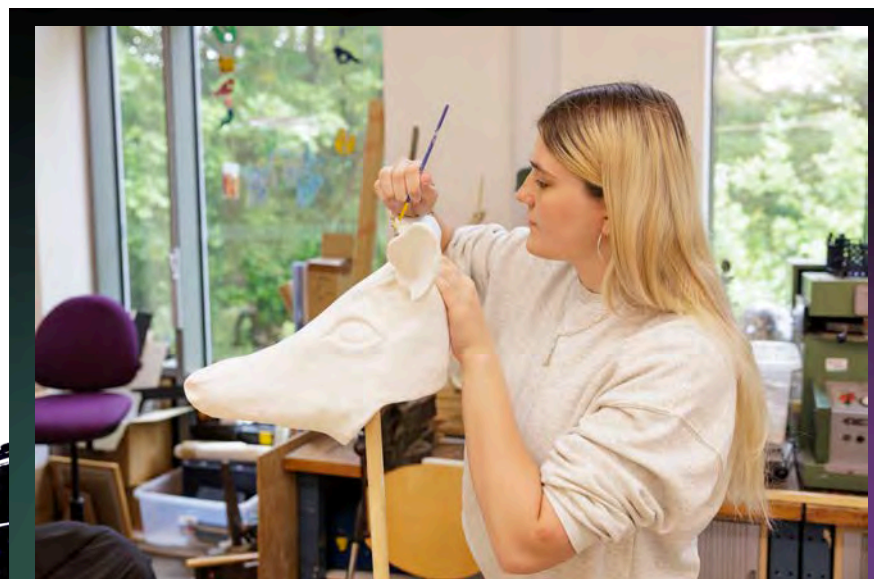
BUXTON
D0117/118
0800740099

LEEK
The HUB
01538 322117

DERBY

01332 590500

or email support@bhc.ac.uk



SUPPORTING YOU WITH CAREERS

Opening Doors, Investing in Futures. Buxton & Leek College offers a high-quality, impartial careers information, advice, and guidance (CEIAG) programme.

Delivered by skilled and experienced professionals, our service meets the National Matrix Quality Standard and complies with the Gatsby Benchmarks for CEIAG in schools and colleges.

We provide:

- Accurate careers and course information, utilizing labour market insights to support your career decisions.
- Impartial CEIAG throughout your time with us.
- Personalized one-on-one career advice and planning.
- Assistance in securing meaningful work placements to develop workplace skills.
- Guidance on progression options, including further studies, higher education, apprenticeships, or employment.
- Opportunities to engage with employers to inform your career aspirations.

Our support includes:

- Confidence-building and motivation for your studies.
- Assistance in overcoming learning and progression barriers.
- Confidential one-on-one appointments in private spaces.
- Detailed action plans from your sessions for reflection.
- Exploration of higher education, including personal statement writing and student finance applications.
- Interview preparation and job application support for apprenticeships and employment.

Appointments are available between Monday to Friday 9am – 4pm (subject to availability). <https://forms.office.com/e/cJY0tP7Th0>, or scan the QR code or speak to a progress coach.



SUPPORTING YOU WITH ADDITIONAL LEARNING SUPPORT

The Additional Learning Support Team provide a quality service to assist students with a learning difficulty, disability or impairment to access the support they need to fully participate with their studies.

We will carry out an assessment that will consider your individual learning needs and then create a package of support that is personalised, reviewed and adapted where required throughout your course. We can offer a range of reasonable adjustments, support and assistive technology including:

- In class support
- Out of class mentor support
- Specialist Tutor support
- Small study groups
- Range of specialist equipment including laptop loans
- Exam access arrangements
- Adapted resources
- Transition

If you have a learning difficulty or disability and feel that you may need support when you come to College, please let us know as soon as possible.

We can offer a wide range of support for students with special educational needs and/or dyslexia, dyscalculia or autism - across all campuses so come along and talk to us in confidence.

For further information, please contact:

Sue Boden - s.boden@blc.ac.uk
Leighton Anderson - l.anderson@blc.ac.uk
Carol Heathcote - c.heathcote@blc.ac.uk
Isobel Davies - i.j.davies@blc.ac.uk

MY ADDITIONAL LEARNING
SUPPORT TUTOR IS:

NAME:

NUMBER:

FACILITIES

LIBRARY SERVICES

Here you can access a range of resources and support for all levels of study. The library team are ready to help you with any questions you have.

For more information about our resources and support, you can explore our main library website at derby.ac.uk/services/fe-library or speak to any member of the team.

There is a library at each site. The Devonshire Library, Buxton Campus is located off the main Dome area. At the Leek Campus the Library is located within The Hub on the ground floor of the Tovell Building.

For Access and Foundation students studying at Derby, Kedleston Road Library is located off the main Atrium.

STUDY SPACES

In our Libraries we offer a variety of comfortable and welcoming spaces for study and independent learning, whether in our Quiet Zones best for individual work, or in our Discussion Zones where you can freely talk and work with together with friends.

BORROWING AND RENEWING BOOKS

You can borrow books at our self-service or Library counter using your ID card which is also your Library card. All books have a 1 week loan period and will automatically renew until an item is requested by another student. We will email you when your item is requested. There are no fines. If books are not returned when requested by another student, a replacement charge for the item will apply. This can be paid online only.

LIBRARY WEBSITE AND ONLINE RESOURCES

View our Library webpage which has links to Library Search, your library account, opening hours and more at: derby.ac.uk/services/fe-library

Your online Library account allows you to renew your books as long as they are not overdue, and you also pay any charges.

PCs AND LAPTOPS

PCs and laptops are available at our libraries. You can use a PC in our library spaces or loan a laptop to use elsewhere on campus.

OPENING TIMES

Please check on the website as times can vary throughout the year.

derby.ac.uk/services/fe-library

You need your ID card to borrow a laptop, and to use the follow-me-printers. These allow you to print, photocopy and scan in colour and black/white.

FE students have printing credit added to their ID cards by the College.

WIRELESS INTERNET ACCESS

Students can use wireless internet access at all libraries, which you can use on your phone or digital device.

EMAIL

Your email account is created automatically when you enrol. You can access your email by logging into UDo using your student ID and password.



PLACES TO EAT AND DRINK

THE GALLERY



THE BALCONY CAFE

We are on the first floor at the Dome campus and is open from 8:45am to 4:00pm.

The Balcony Café serves ethically sourced triple certified coffee and hot drinks, full breakfast, freshly made sandwiches and salads alongside a hot counter serving freshly prepared favourites and daily specials. Cold drinks, crisps and confectionary can also be purchased here.

THE GALLERY

We are based in the William Morris Building overlooking the Plaza and are open Monday to Friday 8:30am to 2:15pm.

The Gallery Café serves ethically sourced triple certified coffee and hot drinks, full breakfast, freshly made sandwiches and salads alongside a hot counter serving freshly prepared favourites and daily specials. Cold drinks, crisps and confectionary can also be purchased here.

Vending machines are available at both campuses.

SALONS AND SPA

Our commercial salons and spa are open for students, friends and family to access all year round. **The salons** at Buxton and Leek offer a range of hair and beauty treatments including waxing, manicures, facials, hair styling, aromatherapy and reflexology, performed by our very own students. Winner of the Best 'Luxury Emerging Spa in Northern Europe' at the World Luxury Spa Awards 2017, the **Devonshire Spa** at the Buxton Campus is the perfect place for some essential you time.

DID YOU KNOW?

As a student you, your friends and family receive 30% off hair & beauty treatments within our commercial salons. You can also get 20% off other retail products and 10% off spa packages!



dermalogica®





ENRICHMENT

Enrichment puts the emphasis on YOU, making your time at college the best it can be! The Enrichment Team are here to give you extra opportunities, in addition to your core studies, which enhance and broaden your overall college experience.

What kind of activities does enrichment involve?

Gym sessions, fitness classes & outdoor activities, lunchtime clubs, charity events, certificated courses such as First Aid, off-campus trips and visits, and events such as BLC Fest in collaboration with the Union of Students.

Why take part?

Enrichment will help you to:

- Build up existing interests and learn new skills.
- Gain additional accreditation/certificates.
- Enhance your employability, CV & UCAS applications.
- Meet new people and have fun!
- Make a difference in your community.
- Try something new and challenge yourself.



For more information you can contact BLC's Enrichment Officer Janis Wild at j.wild2@derby.ac.uk, or visit DO/G24 in Buxton or The Hub in Leek

The Union of Students is a registered charity led by students, for students. Every single one of you makes up the Union, and you're automatically a member when you start your studies.

Although we work together, the Union is completely separate from the College, it's the independence that is key to its role. The Union is both student-led and student-focused and is passionate about ensuring that your time at College is as enjoyable as possible. The organisation is led each year by a group of Officer Trustees, who are voted in by their peers enrolled at the University of Derby, which the College is a part of. This team is supported by a team of full-time and part-time employed staff and also a team of part-time officers (elected volunteers). The Union of Students exists to represent students' voices within the University, College and the wider community - both locally and via NUS nationally.

Buxton & Leek College Pool Team

Interested in joining? Contact Leah Adshead l.adshead@derby.ac.uk or visit DO/ G23 Buxton or the Hub AT Leek.

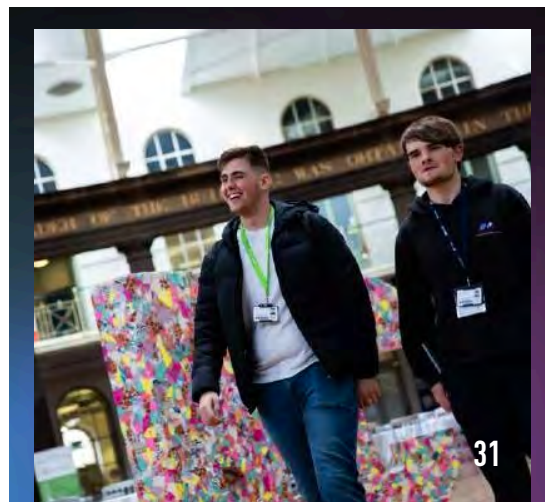
US UNION OF STUDENTS
University of Derby



Membership of the Union ensures:

- Your voice is heard within the College through the Union's course rep scheme. Contribute your ideas using the ideas forum (derbyunion.co.uk/change/ideas/fe).
- You're provided with quality independent advice and support to defend your rights as a student (derbyunion.co.uk/advice).
- You're entitled to decide what we do by fair democratic processes.
- Your experience at College is enhanced via various services, events and activities.
- Your union is accountable for its actions.

Find out more at: derbyunion.co.uk



STUDENT VOICE



At BLC, student voice is at the heart of everything we do. Your opinion matters and your voice should be heard.

Your voice is really important to us and we want to continue to improve your time at Buxton & Leek College. We have lots of different ways that we collect student voice and we encourage all of our students to get involved, including:

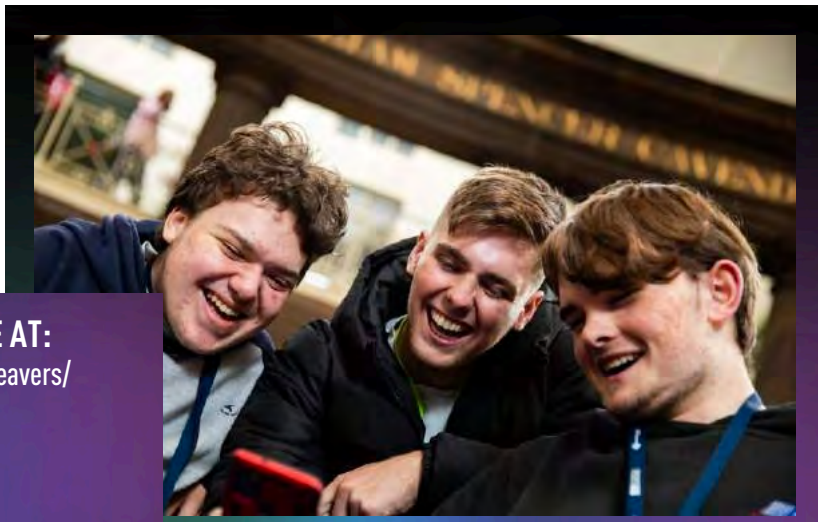
- Course reps
- Student surveys
- Monthly pop up stands
- Focus groups
- Comment cards
- Feedback walls

What do we do with this information?

- Each month we have meetings to discuss your feedback and views. We make changes and improvements, where we can, based on the information you give us.
- Your views help shape how your College looks and feels.
- We listen to what you have to say and give you the support you need to make changes in your college.
- We post 'you said, we did' each term on the screens around the Dome and in Leek.

Do you want to talk more?

Talk to your Progress Coach today! Or leave a comment on the student voice website page at blc.ac.uk/student-voice



FIND OUT MORE AT:
blc.ac.uk/school-leavers/student-support

